

Yates Theatre

Venue Technical Specifications



Genevieve E. Yates Memorial Centre

Information Updated: January 2, 2025

Location

1002 – 4 Avenue South
Lethbridge, Alberta
Canada, T1J 0P5

Contact

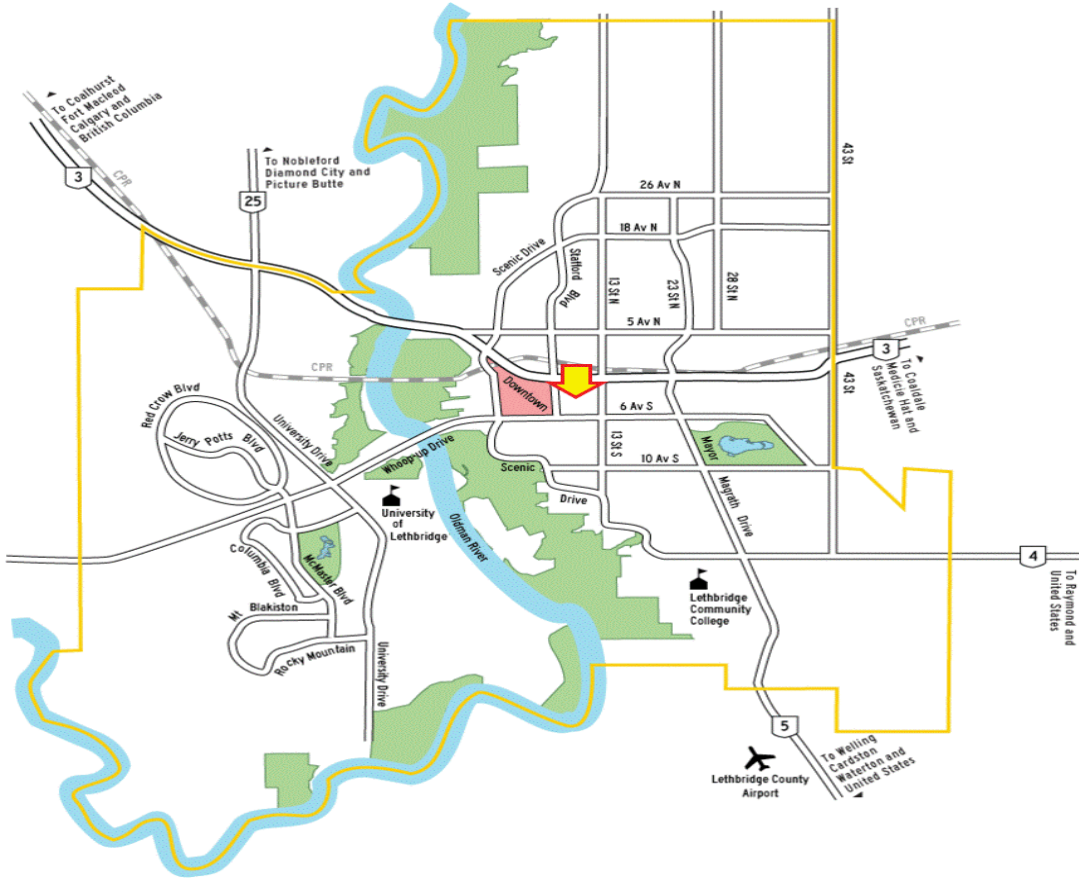
Main Phone: 403-393-6131
Tickets: 403-329-7328 (SEAT)
www.visitlethbridgearena.ca



Table of Contents

Lethbridge Map	4
Parking	4
Seating Capacity	5
Stage Dimensions	5
Loading Facilities	6
Power	7
Projector	7
Audio	8-10
Lighting	11-12
Video Production Mixing / Streaming / Recording System	13-15
Stage	16
Pianos	17
Dressing Rooms	17
Green Room / Rehearsal Room	18
Costume / Workshop	19
Ticket Centre / Mezzanine / Concession	20

Lethbridge Map



Public Parking

Monday – Friday (9 am to 5 pm)

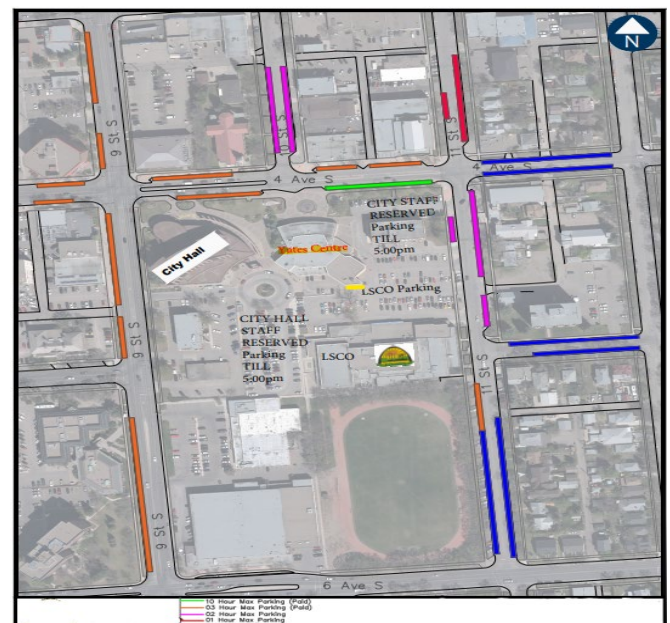
2-hour free parking available in the LSCO lot.

Paid time parking on streets.

Evenings (After 5) and weekends

Free Parking everywhere.

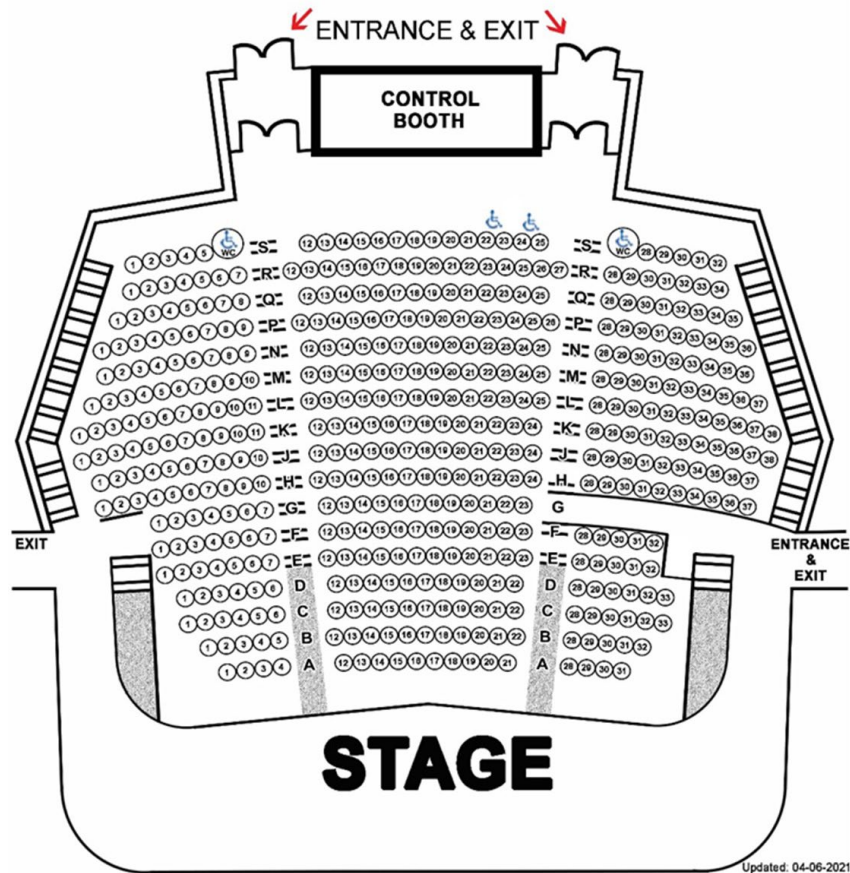
There are three dedicated Yates client parking stalls available. Please contact 403-393-6131 to arrange access.



Auditorium

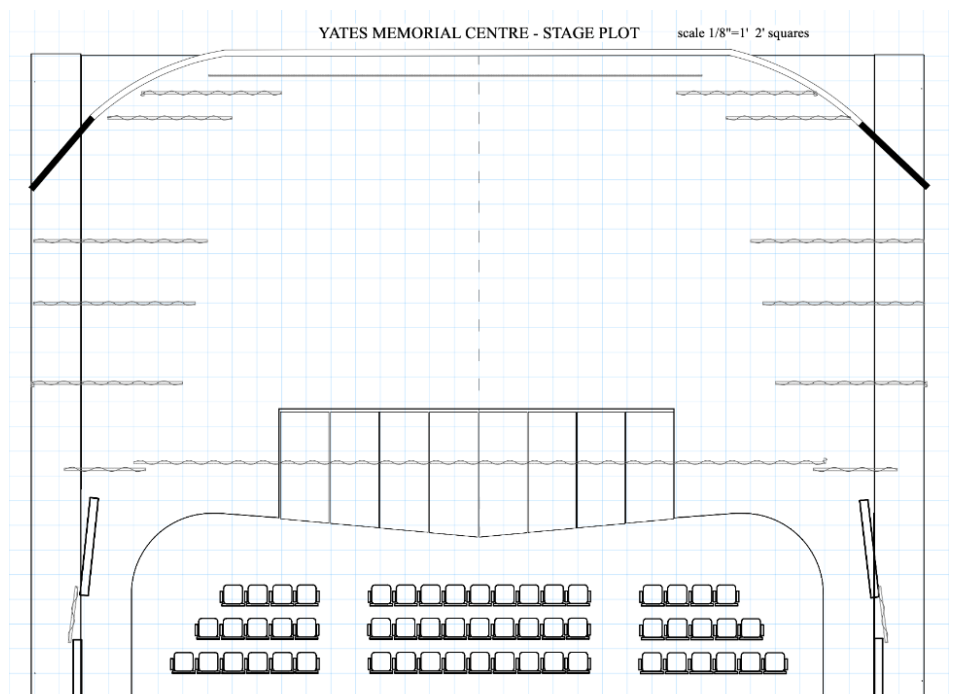
Seating Capacity: 470 and 4 Wheelchair

Yates Theatre



Stage Dimensions

Proscenium Width:	Max - 50' (15.2 m)
	Min - 26' (8 m)
Stage Depth:	38' (11.6 m)
Border Height:	16' (4.9 m)
Proscenium Height:	17' (5.2 m)
Wing Space:	33'x24' (10 m x 7.3 m)



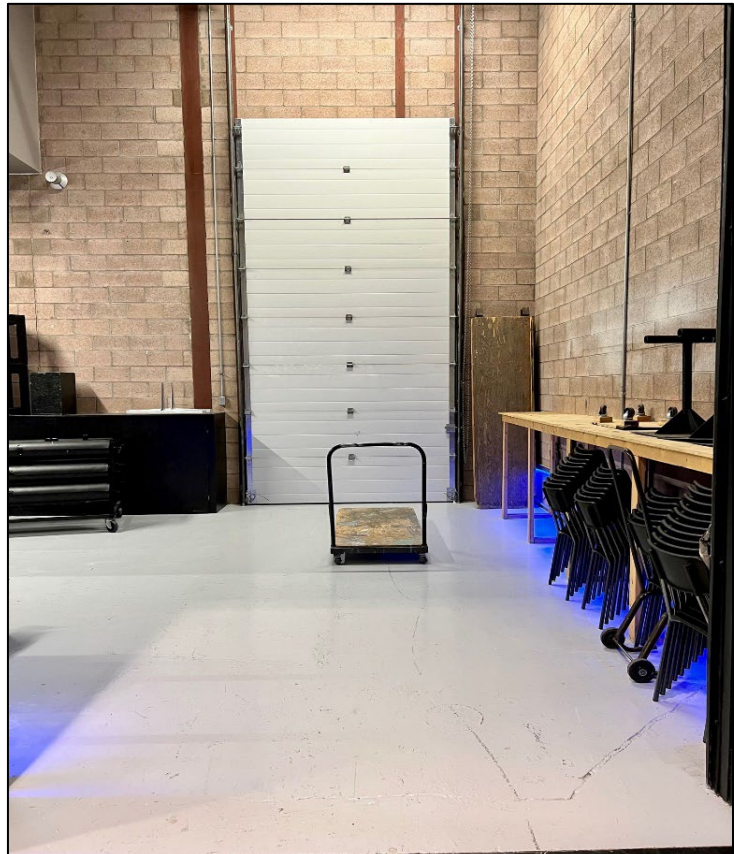
Loading Facilities

Loading bay is on the west side of the building. Access is off Stafford Dr. S. behind City Hall. If parking a truck or bus over 35 feet in length, please call 403-315-9405 at least two weeks ahead of your event as the traffic circle will need to be blocked off.

Dimensions

Door clearance: 16' high x 8' wide
Height from ground: 35"
Push to Stage Left Wing: 20'
Dock is at stage level.

Please ensure that vehicles are turned off when loading doors are open.

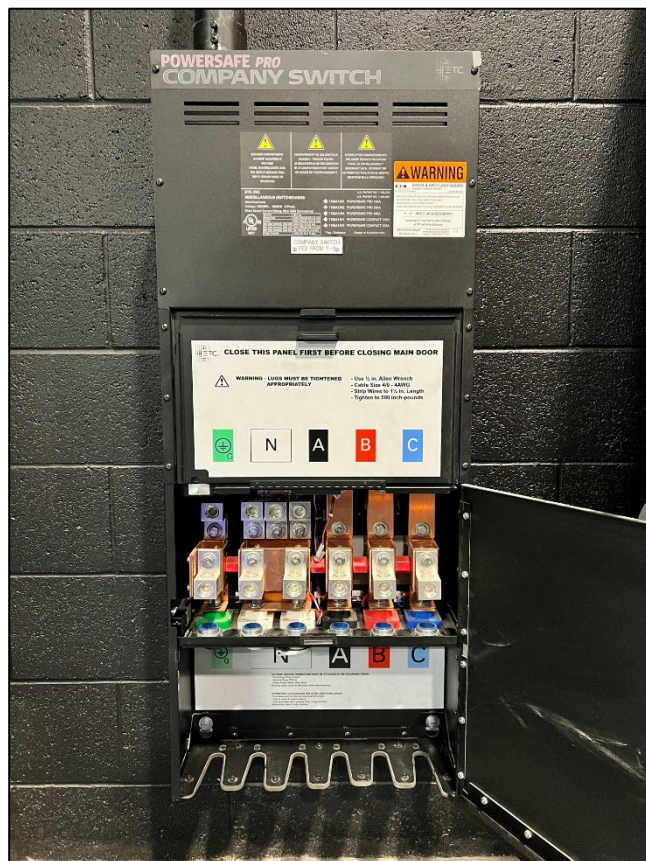


Power

A 200-amp three phase power connection is available Stage Left. It can accommodate camlocks or bare wire. Bare wire connections will require an electrician to be hired at user cost.

There is no shore (bus) power.

Please ensure your coach has adequate fuel for generator.



Projector

Panasonic PT-RZ970:

10,000 Lumens

Underhung from FOH Catwalk.

Surfaces:

Projection Screen (retractable)

16'(4.8m) wide X 13'(4m) high

Located 14'(4.4m) from front of stage.

Cyclorama

32'(9.7m) wide X 18'9(5.5m)

Located 39'(11.9m) from front of stage.

Playback:

Macbook Pro with QLab 5 full video license.

Video ports in all input/return locations.

Audio

Microphones:

- 8 - Shure ULXD2 Wireless SM58
- 8 - Shure ULDX1 Wireless Beltpacks
w/ Countryman Headsets
- 8 - Shure SM58 Vocal
- 10 -AKG C1000s Condensor
- 5 - Beta 58A
- 4 - Shure SM-81-LC
- 1 - Shure Beta 52A
- 6 - Crown PCC-160
- 4 - Shure Beta 98 AD/C Drum
- 1 - Shure Beta 98 A/C Instrument
- 1 – Shure Beta 98 H/C Instrument
- 10 -Shure Beta 57 Instrument
- 5 - Sennheiser E-604 Drum
- 4 - Sennheiser MD421-11

Mic Stands:

- 9 - Ultra Mic Stands w/ Booms (Round Base)
 - 10 -K&M Tripod Mic Stands w/ Booms
 - 6 - K&M Tripod short Mic Stands w/ Booms
 - 10 - Apex Desktop Mic Holders
- Assorted Clips and Cables

Playback:

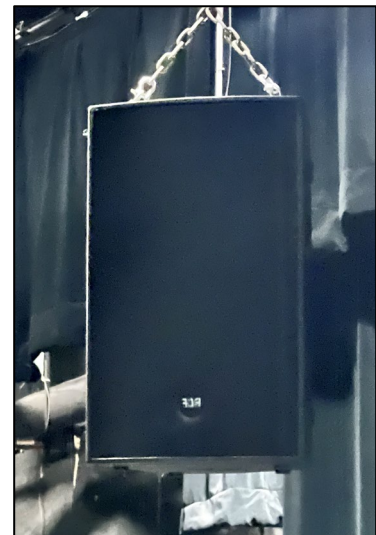
Macbook Pro w/ QLab 5 (full audio and video license) available. Technician can build a simple session on event day, or more complicated sessions in advance if files are sent prior to event and required time is booked by the user. CD and tape players are available upon request.

Control Console:

- 1 - Yamaha CL1 –Located in control booth
- 1 – Yamaha CL5 –Located at house mix position

Inputs/Outputs:

- 1- 3224 Yamaha RIO in/out digital stage box
- 3- 1608 Yamaha RIO in/out digital stage box
- 2- 25' 12 inputs 4 returns sub snakes
- 2- 50' 12 inputs 4 returns 50' digital sub snake



Speakers:

- 10-RCF HDL20-A Line Array (5 per side)
- Side Fill: 2-RCF 4PRO 3031-A (1 per side)
- Front Fill: 2-Renkus-Heinz PN61 (not installed)
- Subwoofers – 2 - RCF Sub 8006-AS
- Monitors – 12 - RCF NX-12 – SMA Active Stage Monitors

DI Boxes:

- 3 - Radial Pro DI Passive
- 2 - Radial JDI Passive
- 4 - Radial J48 Active
- 4 - Radial Trim II w/ volume control

House Mix Position

The house mix position is located at the back of the auditorium behind row S.



Road Systems

The Yates Theatre audio system is run on a Dante Network. Outside systems can be integrated with the Yates Theatre sound system. Analog is available if required. Shielded Cat 6 running from mix position to any input/return location is available.



Input/Returns Locations

- Stage Left
- Stage Right
- Up Stage Right
- Orchestra Pit
- House Mix Position
- Catwalk FOH
- Tech Booth

Program Sound

Program sound can be sent to backstage hall, dressing rooms, loading dock and Green Room from the mixing console or from dedicated microphones. Audio and video can be sent to the Sterndale Bennett Theatre. Live video can be sent to the Green Room.

Clearcom

The Yates Theatre has six wireless headsets with two channels (A or B). Wired headsets can be connected in the following locations: Stage Left, Stage Right, Booth, Pit and Back of House.

External Building Speakers

2 - Martin Audio CDD10TX-WR

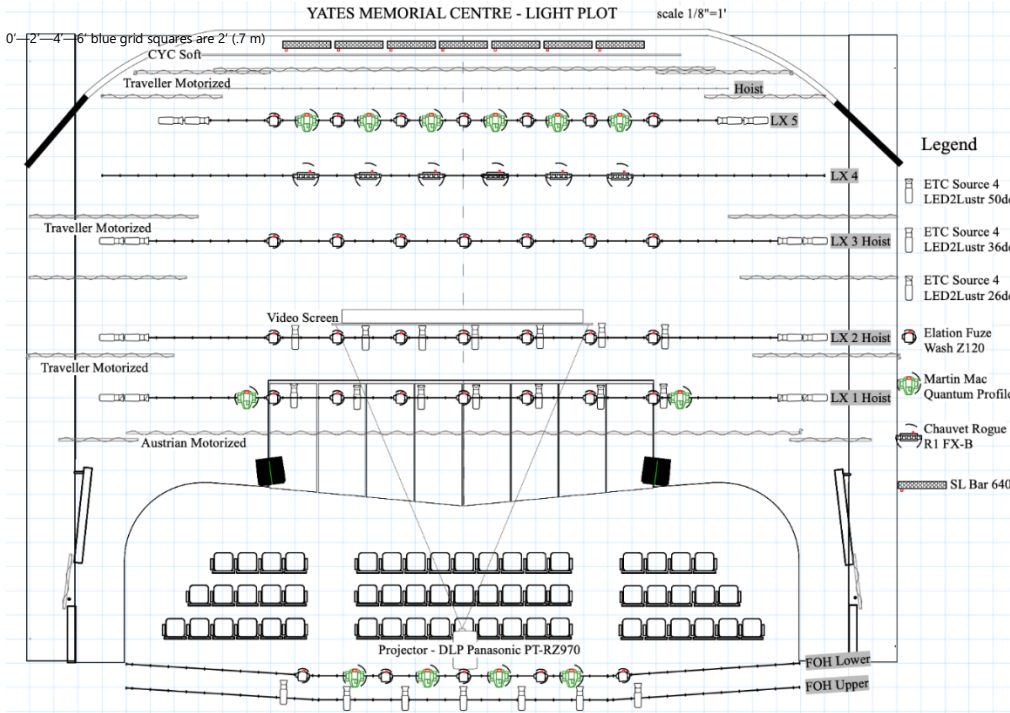
A pair of stereo speakers are mounted on the front of the building above the main entrance. A dedicated audio feed (via the in-house sound system) can be routed to these speakers.



Lighting

House Hang

House hang fixtures can be re-focused but must be restored to house hang positions before end of rental.



Circuits

FOH – 14 @ 20 A

SR Wing – 2 @ 20 A

SL Wing – 2 @ 20 A

1st OH LX-14 @ 20 A

2nd OH LX-14 @ 20 A

3rd OH LX-14 @ 20 A

4th OH LX-14 @ 20 A

5th OH LX-14 @ 20 A

Up SR wall - 4 @ 20 A

Up SL wall - 4 @ 20 A

Control and Dimming

Lighting Console - ETC Ion XE

Stage lighting is 100% LED with 30 portable ETC 750W dimming packs available for incandescent fixtures.

Network uses sACN protocol and ETC Net3 Gateways for DMX I/O.

House and Work Lights are run via ETC Touch Screen and are also patched in Console.

Building exterior architectural lighting can be programmed upon request.

Lighting Inventory



- 58 – ETC Lustr 2 bodies and accessories w/ (20) 26, (40) 36 and (17) 50 degree lenses
- 39 – Elation Fuze Wash z120
- 27 – ETC ColorSource Linear 1
- 11 – ETC D22 Lustr Desire
- 14 – Martin Mac Quantum Profile
- 12 – Chauvet Colorado 2 Quad Zoom Tour
- 10 – Chauvet Rogue R1 FX-B
- 14 – Showline SL Bar 640 LED
- 2 – Follow Spots – LDR Canto 700 msd/msr
- 2 – Ultratech Radiance Hazers

ETC Prodigy Motorized Pipes

There are 4 prodigy pipes above the stage.

Total Live Load 1900 Lbs. each.

1st LX – 8'(2.4m) from front of stage. 18'(5.5m) trim
Current load is around 1300 Lbs.

2nd LX – 12'(3.7m) from front of stage. 18'(5.5m) trim
Current load is around 1100 Lbs.

3rd LX – 20'(6.1m) from front of stage. 18'(5.5m) trim
Current Load is around 1000 Lbs.

4th Pipe -28'(8.5m) from front of stage. 20'(6.1m) trim

This pipe is reserved for hanging back drops, set pieces, etc. Note that this pipe is downstage of 4th LX and will obscure the Quantum back line.



Video Production Mixing/Streaming/Recording System

Auditorium Cameras and Locations

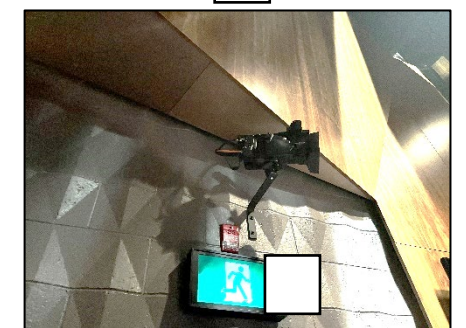
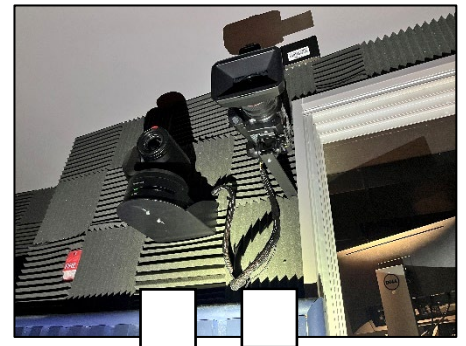
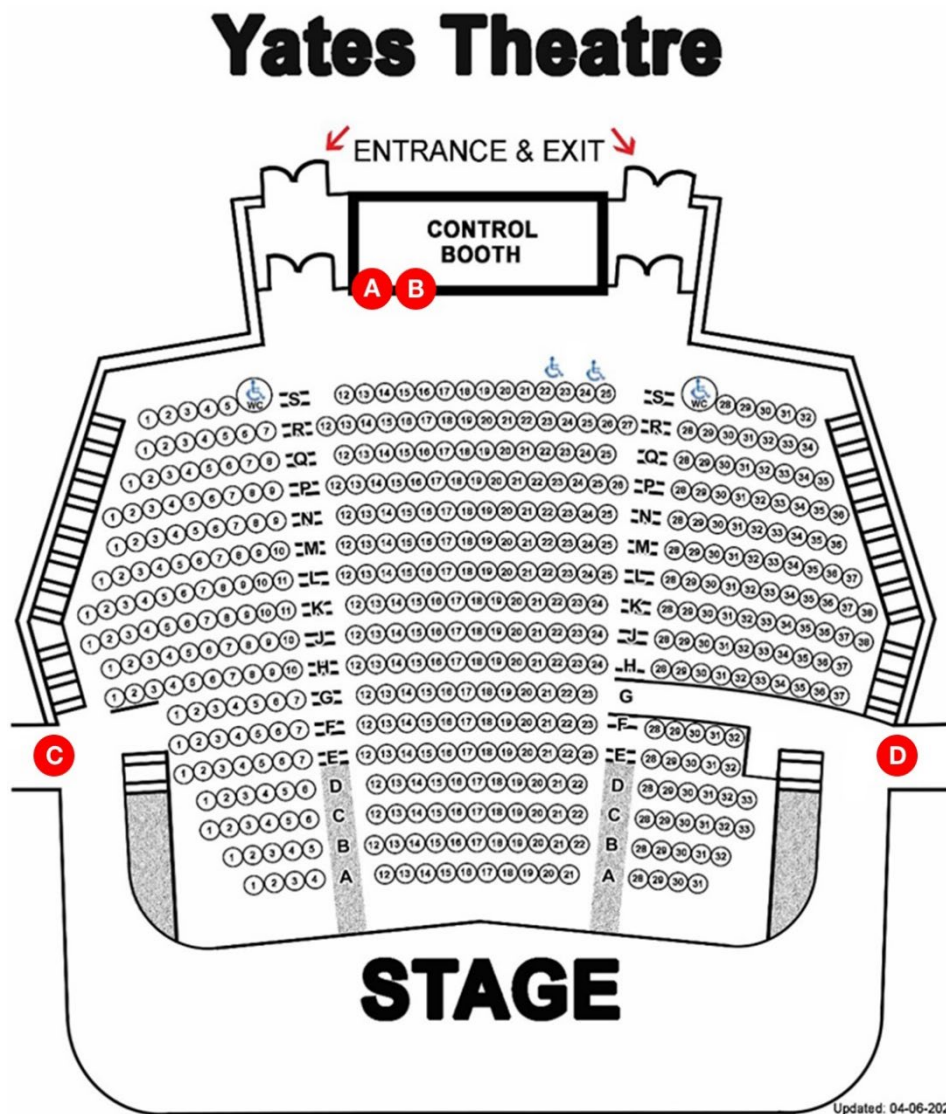
Four 4K cameras are permanently installed within the auditorium and are connected to a TriCaster TC410Plus Video Production Mixer/Switcher:

Camera A - Panasonic AWUE150KPJ8 (Pan-Tilt-Zoom)

Camera B - Panasonic AG-CX350 4K (Static)

Camera C - Panasonic AWUE150KPJ8 (Pan-Tilt-Zoom)

Camera D - Panasonic AG-CX350 4K (Static)



Video Mixing/Switching and Camera Control

1 - Newtek TriCaster TC410 Plus Video Production Mixer/Switcher

- 4 SDI Camera Inputs (connected to the 4 in-house cameras)
- 1 HDMI Input for external PC via Newtek Spark Plus™4K HDMI Encoder
- 2 Audio Inputs via analog connection to the in-house sound system

The TriCaster can be used to stream a live program feed to two different streaming services simultaneously while also recording a copy of the program feed to the internal hard drive in H.264 format. A Windows-compatible external storage device (NTFS, ExFAT) is required to retrieve the recorded file.



1 - Panasonic AWRP150GJ Camera Controller

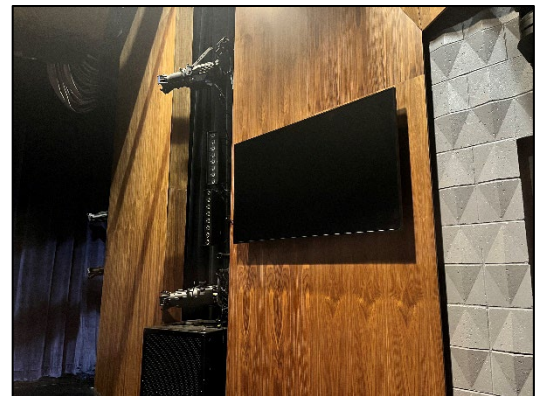
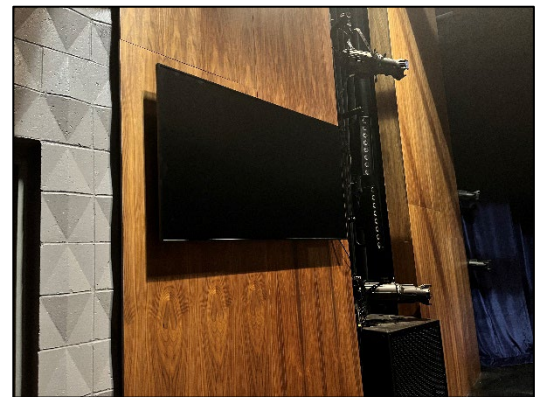
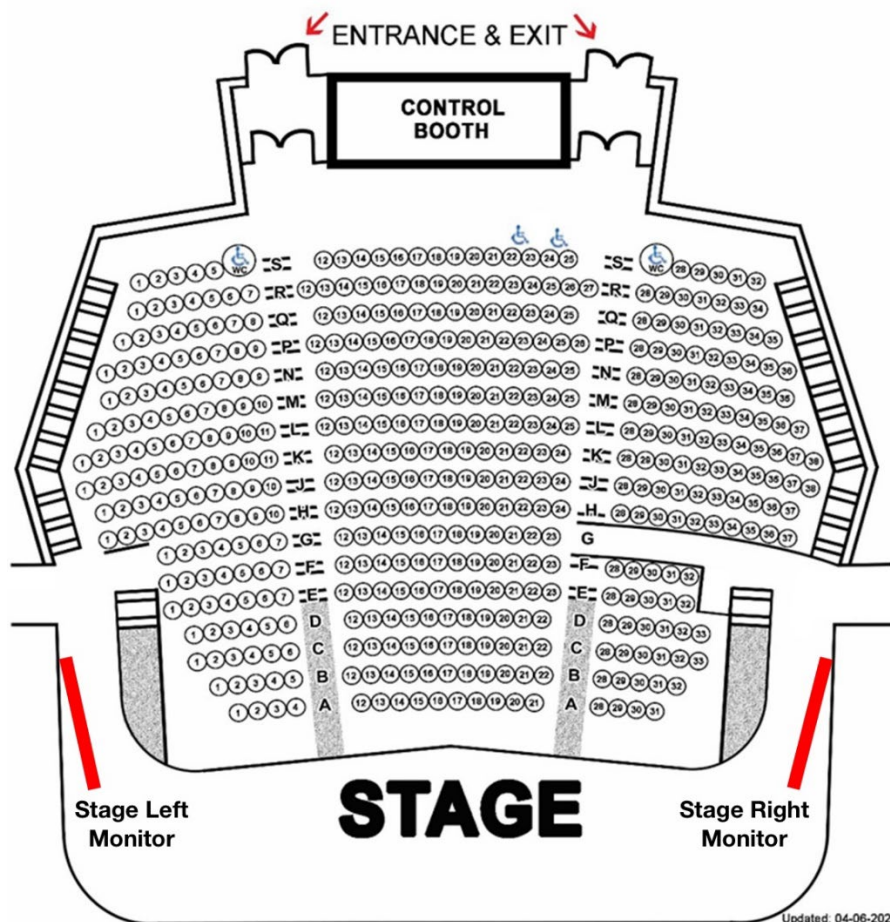
The camera controller can be used to adjust the Zoom and Focus of all four in-house cameras, as well as the Pan and Tilt of the two PTZ cameras (cameras A & C).

Auditorium Video Monitors and Locations

2 - Planar SLM652 65" Displays

Two auditorium videos monitors are positioned on the Stage Left and Stage Right walls near the apron of the stage. Two external HDMI video sources can be connected to these video monitors, allowing either a single video source to be viewed on both monitors simultaneously or two separate video sources to be viewed independently on each screen.

Yates Theatre



Stage

Stage Floor

- Painted tempered Masonite over wood
- The floor may be painted provided it is restored to the building specified black by the user by the end of rental period at the user's cost
- Fastening is permitted, no brad nails or staples

Dance Floor - (6) rolls Rosco Adagio 44' X 63"

Traps – None

Stage Draperies

- Main Curtain - Silver Austrian - 32'2" (9.8m) from cyc
- Blue Legs - Manual (to define Proscenium) - 31'6" (9.6m) from cyc
- Downstage Traveller - Motorized Split Travel - 25' from cyc
- Midstage Traveller #1 - Manual Split Travel - 18' (5.5m) from cyc
- Midstage Traveller #2 - Motorized Split Travel - 11' (3.3m) from cyc
- Upstage Traveller - Motorized Split Travel - 1' (0.3m) from cyc
- Cyclorama - Soft Cyc - 32' (9.7m) wide X 18' high

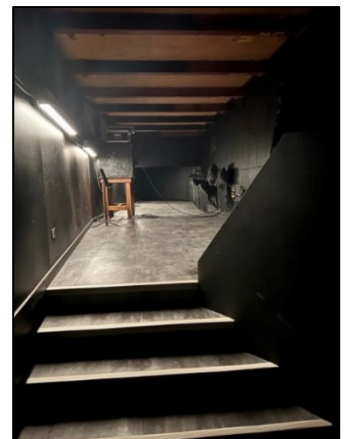
Stage Equipment and Furnishing

- Tables (Black Polymer) - (12) - 8' (6) - 6' (4) - 2' 6"
- Chairs (Black hard) - (48) (Black Cloth) - (100)
- Music Stands - (20)
- Risers (Wenger Platform 4' x 8') - (8) - 16/24" high (8) - 8" high
- (Bil Jac Platform w/ railings) - (12) - 4' x 8' - (4) round corners 6"/10"/16"/22" high
- (Choral 3 Step) - 4

Orchestra Pit

- 32' (9.7m) wide SR to SL
- 9' (2.8m) long Down to Upstage
- Depth 7'8" (2.3m) from stage level
- 2'8" (.85m) from audience level

At least one month's notice is required for the removal of the pit and will incur additional user costs.



Pianos

Bosendorfer Concert Grand – 9'

Yamaha Concert Grand – 8' 6"

Yamaha Upright Model P22 SE

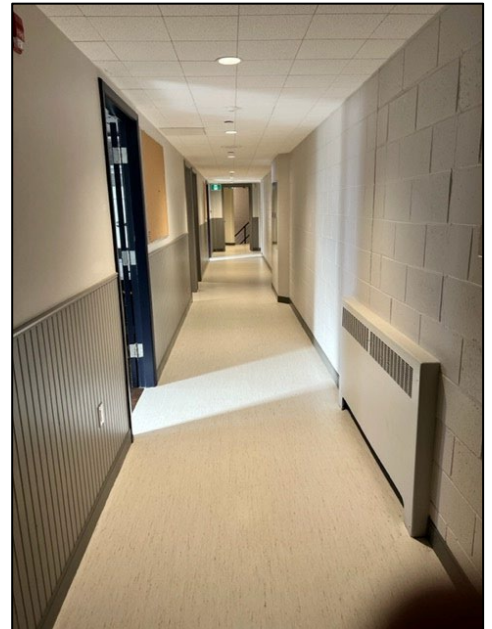
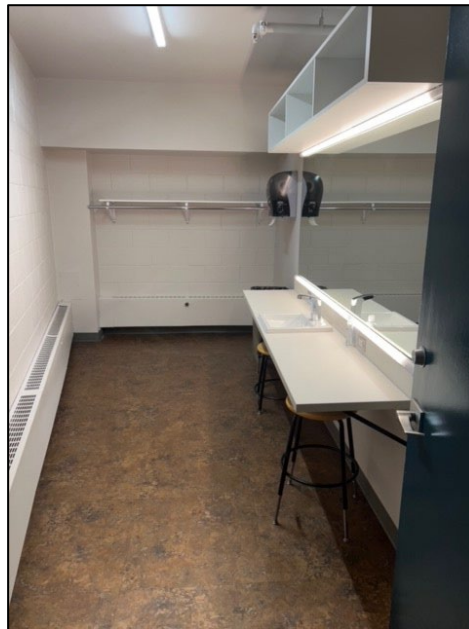
Yamaha Upright Model P22 SE

Yamaha Upright Model U1 (Green Room)

Yamaha Digital Model P125B



Dressing Rooms

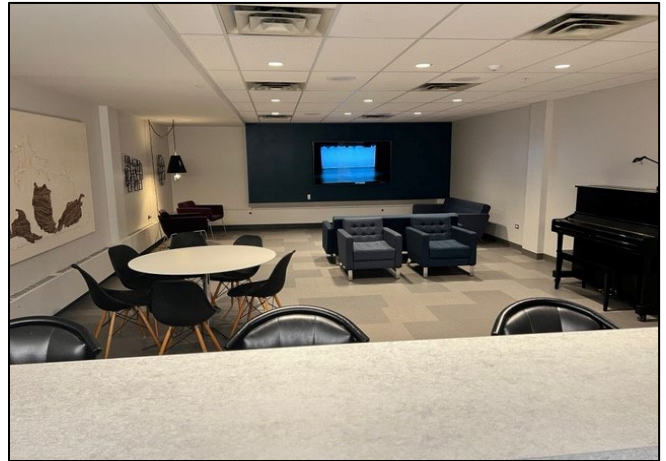


There are four dressing rooms in the backstage cross-over hallway:

- Two large each with a wardrobe and attached two-stall washroom with sink and stall shower. Fits approximately 12 people.
- One small with sink. Fits approximately 4 people.
- One small without a sink or mirror. Fits approximately 2 people.

Extra room is available in the downstairs hallway and rehearsal room for overflow.

Green Room



The Green Room is located downstairs from the backstage hallway and is accessible via stairs and a wheelchair elevator. It has a fridge, sink, microwave, piano and a 70" television with a live video feed of the stage.

Rehearsal Studio

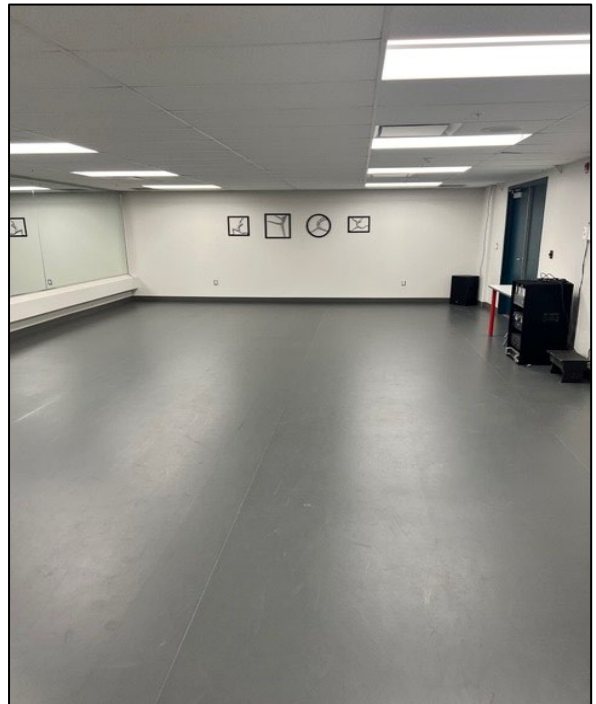
Rehearsal Studio = 38'(11.5m) x 22' (6.7m)

Is located downstairs and has a sprung dance floor, full length mirrors and a sound system.

Ceiling height is 7.5' (2.3 m.)

Props Room

The **Props Room** is located downstairs and has a large collection of hand props and set pieces available for use. Please return items to their original location and in good condition after use.



Costume

The **Sewing Room** (16' (4.9m) X 12' (3.7m)) is located downstairs and contains sewing table, three-sided full-length mirror, steamer, iron, ironing board and assorted sewing accessories.



The **Laundry Room** has an Electrolux LuxCare washer, dryer, and a floor sink. High efficiency laundry soap must be used and is not provided.

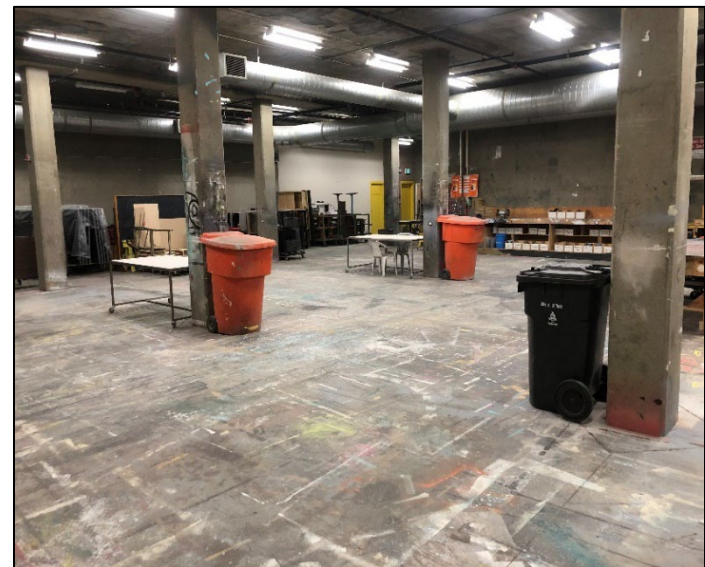


Workshop

A large workshop is in the basement of the Sterndale Bennett Theatre. A cargo elevator is used to move sets and materials to the Yates stage via the SR wing. Cargo elevator dimensions are 15' 6" (4.8m) long and 5' 5" (1.7m) deep. Inside clearance is 13' (4m). A waiver must be signed to use the workshop.

The Workshop contains the following equipment:

- 1-Sawstop 10" Table Saw
- 1-DeWalt DW708 12" Sliding Mitre saw
- 1-Mastercraft 9" Bandsaw
- 1-Shop Craft 6" heavy duty bench grinder



Ticket Centre

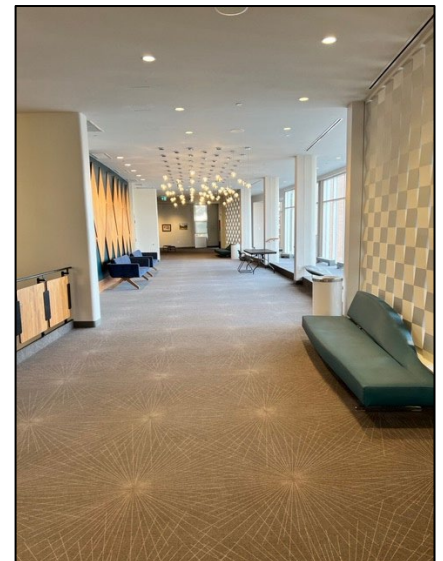
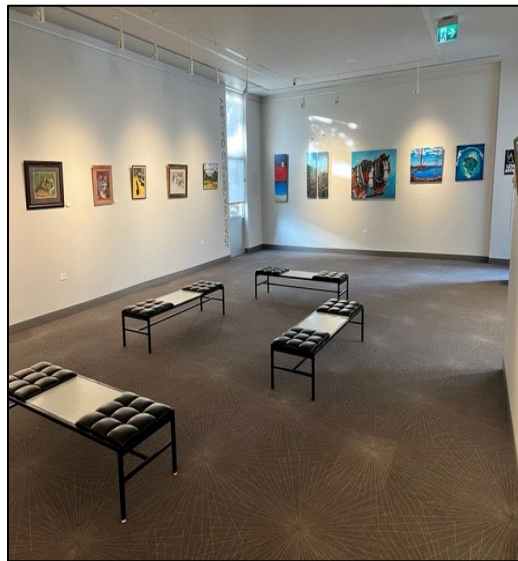
The Ticket Centre is located in the lower lobby. It is the ticketing provider for most events at the Yates Memorial Centre.

- For ticketing services call – 403-320-4225
- To purchase tickets call – 403-329-7328 (SEAT) or www.visitlethbridgearena.ca
- Open Monday – Friday 10 AM to 5 PM.
- Extended hours on event days.



Mezzanine

Main entrance doors to Yates Theatre. Elevator accessible.



Concession

VisitLethbridgeArena.com is the service provider for the Yates Concession. Questions or special requests can be directed to cares.christianson@lethbridge.ca or 403-320-3103.

