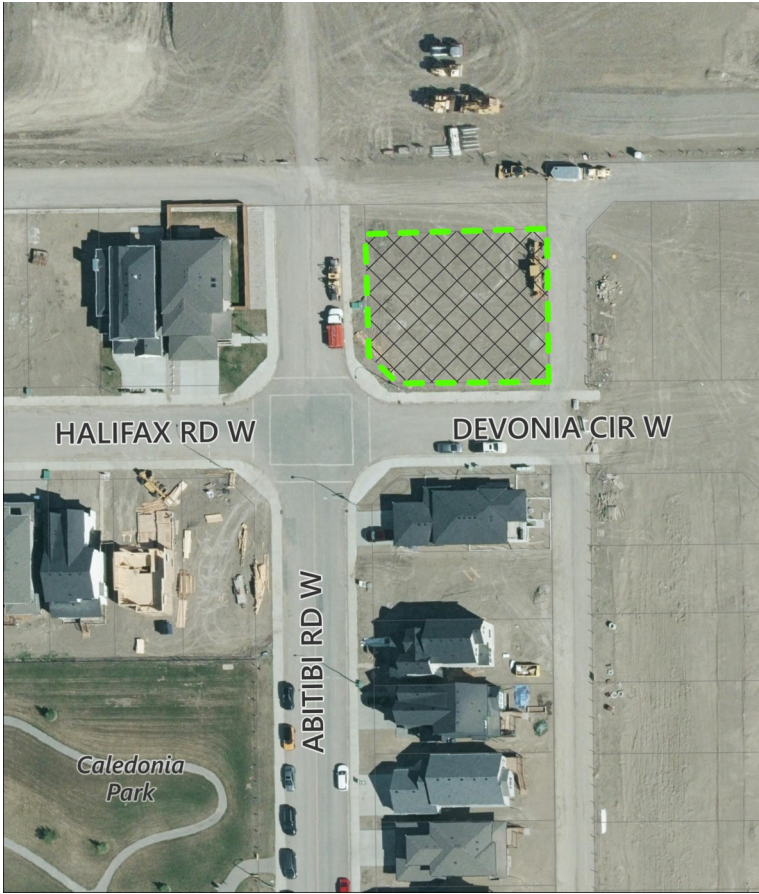
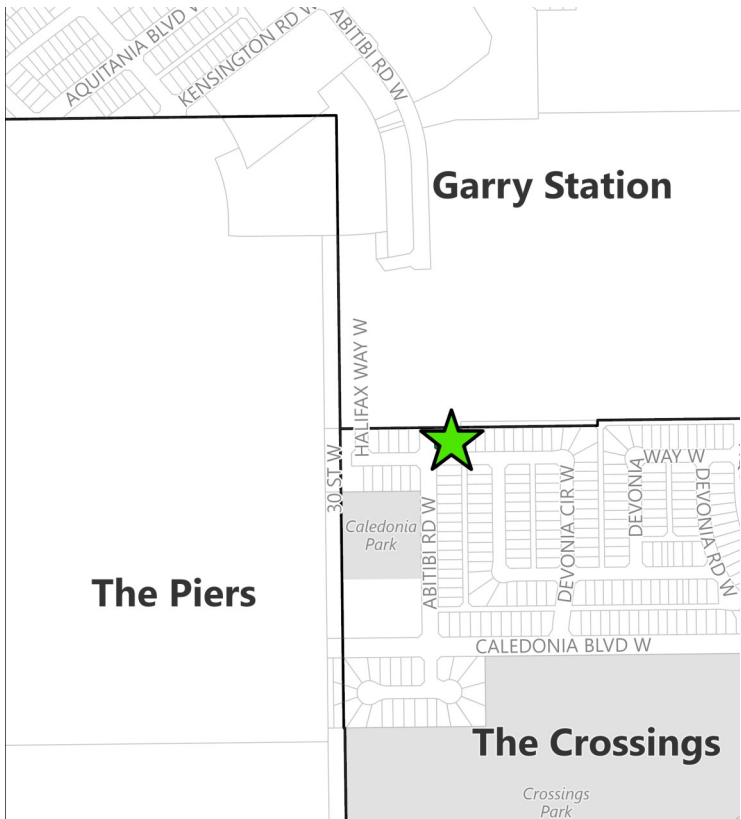


BYLAW 6442

1163 Abitibi Rd W



Proposal

- Amendment to [Land Use Bylaw 6300](#) to rezone the parcel listed above.
- **From:**
 - Mixed Density Residential (R-M)
- **To:**
 - Direct Control (DC)
- Applicant: Urso Holdings Ltd.

What Does This Mean?

- Will allow an increase in the maximum number of children that can be accommodated at a proposed Child Care Facility to 95.
- A Child Care Facility with a maximum of 50 children can already be accommodated under the existing zoning.
- See the attached map for land use details.

Relevant Planning Documents

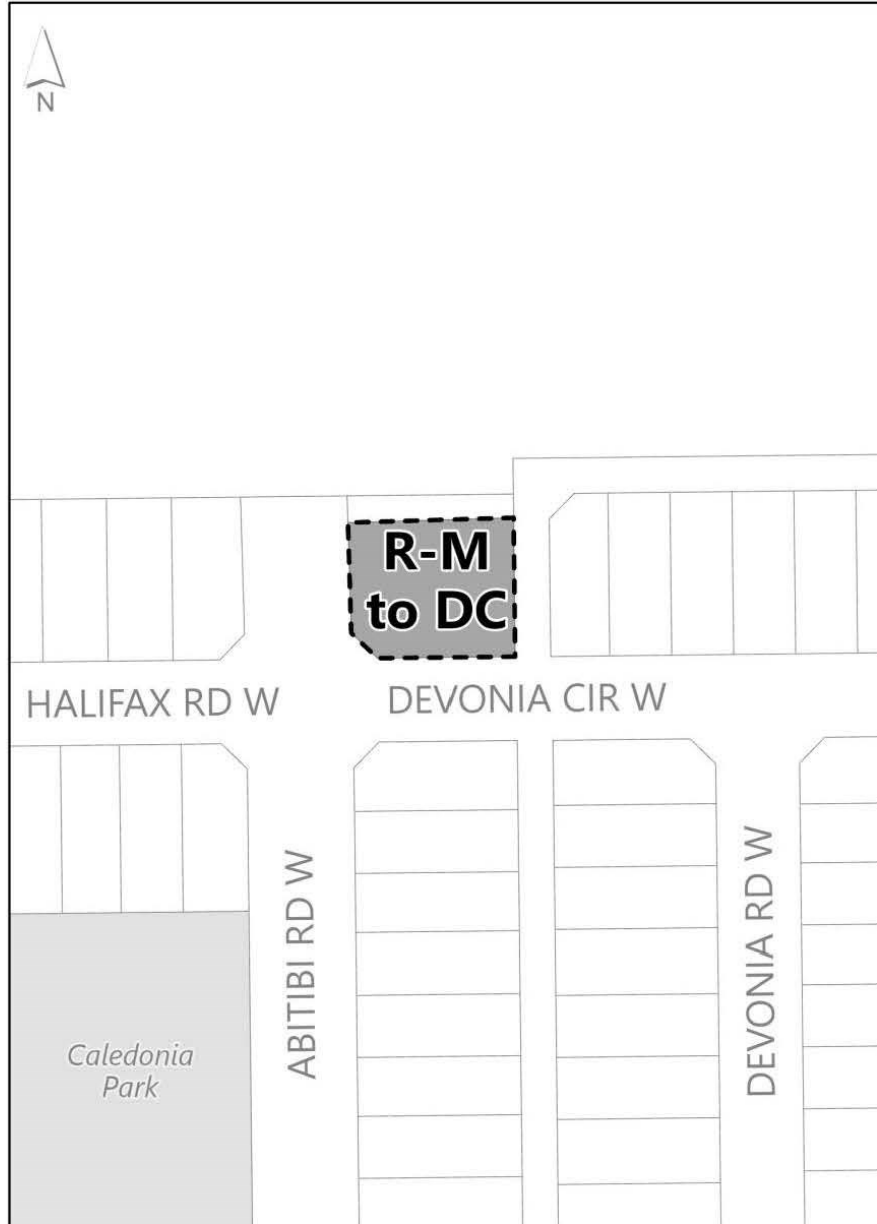
- [South Saskatchewan Regional Plan](#)
- [Municipal Development Plan](#)
- [West Lethbridge Phase II Area Structure Plan](#)
- [Benton Crossing Outline Plan](#)
- [Land Use Bylaw 6300](#)



Questions Regarding the Bylaw?

Contact: Tyson Boylan, Senior Community Planner
403-320-3928 or tyson.boylan@lethbridge.ca

Schedule A
PROPOSED LAND USE BYLAW AMENDMENT
Bylaw 6442



 Amendment Area

LEGAL: Plan 2410305, Block 7, Lot 52
Municipal Address: 1163 Abitibi Rd W
From: Mixed Density Residential (R-M)
To: Direct Control (DC)