

# WASTE & RECYCLING UTILITY

## 2021 Annual Report



# TERRITORY ACKNOWLEDGEMENT

The City of Lethbridge acknowledges that the place we now call Lethbridge has for many generations had another name given to it by the Siksikaitsitapi, the Blackfoot Peoples. The name is Sikóóhkotok, a reference to the black rocks found in the area.

The City of Lethbridge acknowledges that we are gathered on the lands of the Blackfoot people of the Canadian Plains and pays respect to the Blackfoot people past, present and future while recognizing and respecting their cultural heritage, beliefs and relationship to the land. The City of Lethbridge is also home to the Metis Nation of Alberta, Region III.



# Table of Contents:

---

- 4** Message from the Utility
- 5** Service Level Areas
- 6** Our Service Levels
- 7** Waste Facts 2021
- 8** Waste & Recycling Utility Cycle
- 9** Waste & Recycling Roadmap
- 10** Utility Rates History
- 11** Utility Rates Breakdown
- 12** Waste Collection 2021 Highlights
- 13** Waste Collection Programs & Services
- 14** Residential Waste Generation
- 15** Residential Bi-Weekly Garbage Collection
- 16** Residential Bi-Weekly Recycling Collection
- 17** Recycling Station Drop-Off Collection
- 18** Yard Waste Site Drop-Off Collection
- 19** Waste Collection 2022 Plans
- 20** Waste Processing 2021 Highlights
- 21** Waste Processing Services & Programs
- 22** Waste & Recycling Centre Landfill
- 23** Waste & Recycling Centre Diversion
- 25** Materials Recovery Facility Processing
- 26** Hydro-Vac Waste Facility Opens
- 27** Waste Processing 2022 Plans
- 28** Capital Projects
- 30** Education & Outreach 2021 Highlights
- 31** Education & Outreach 2022 Plans
- 32** Sustainability 2021 Highlights
- 33** Sustainability 2021 Plans & Projects
- 34** Sustainability 2022 Plans
- 35** Business Diversion 2021 Highlights
- 36** Business Waste Generation
- 37** Business Diversion 2021 Projects
- 38** Business Diversion 2022 Plans
- 39** Acknowledgements
- 41** For More Information

# MESSAGE FROM THE UTILITY

The Waste and Recycling Utility Annual Report was created to highlight projects and information related to the services and programs provided to the community during the last year. Most notable for 2021, was the continued collection services and facility operations during the second year of the COVID-19 pandemic. This would not have been possible without the hard work of both our Waste and Recycling Collection Operations team and the staff and contractors who operate the Waste and Recycling Centre.

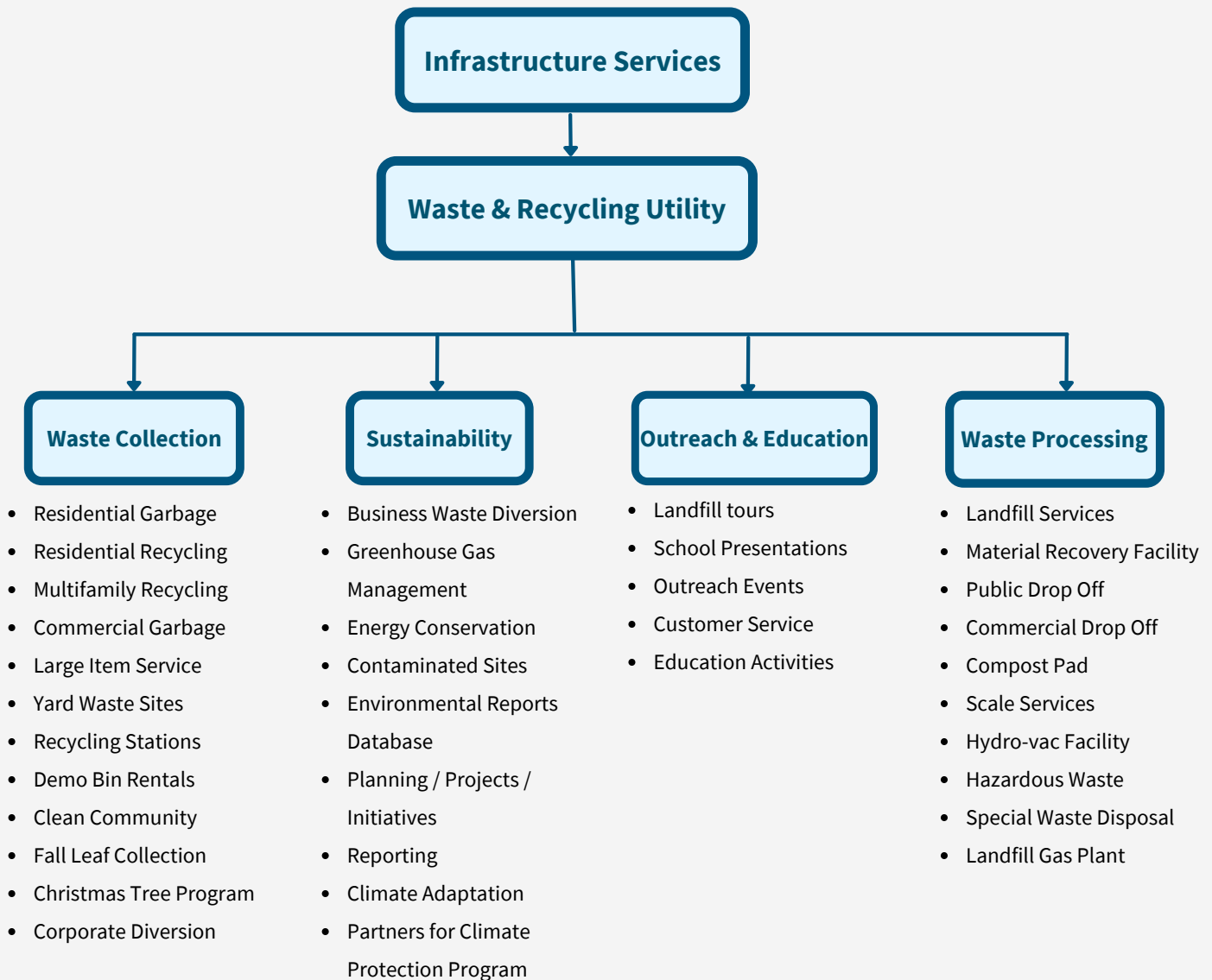
As we continue making progress with our 2030 waste reduction targets, we welcomed the news in June of 2021 when City Council approved the Capital Improvement Program E7 Waste and Recycling Curbside Organics Collection. Phase One of the program is set to begin in spring of 2022 with the rollout of a green cart service to 2,000 homes and the construction of an Organics Composting Facility at the Waste and Recycling Centre. This program will reduce waste from residential and commercial sectors and help achieve the community's waste reduction target of 50% from 2013 baseline levels by 2030. The construction of the Organics Composting Facility will provide processing capacity for the Mandatory Organics program for the commercial sector and Phase Two of the Curbside Organics Collection program which includes city-wide green cart implementation in the spring of 2023.

In another area of innovation and firsts, we successfully completed the construction and opening of the newly built Hydro-Vac Waste Facility located at the Waste and Recycling Centre. This facility provides safe disposal of hydro-vac slurry waste and is one of the first in this region. In 2022, the WRC will focus on optimizing the facility to expand services and accepted material to increase utilization from regional and commercial customers.

As we move forward with reducing the City's carbon emissions, we welcomed the successful construction of the groundwork for a Landfill Gas Control Plant. This facility will help improve safety and environmental performance and reduce greenhouse gas emissions from the landfill site. As landfill gas is primarily comprised of methane, reducing methane emissions from the landfill is critical to the City's carbon emissions reduction goals.

We look forward to another busy and productive year of providing the residents and businesses of Lethbridge with an excellent level of service as their Waste & Recycling Utility.

# OUR SERVICE LEVEL AREAS



# OUR SERVICE LEVELS



## **Garbage (black Cart):**

- Bi-weekly garbage collection.
- Residents have two choices: 240 L and 360L Carts.
- 240 L Cart \$10.23/month, 360 L Cart \$11.94/month
- Fee includes 2 Large Item Service per year
- Fee includes up to 250 Kg per household as a Free Saturday Service to encourage use of the landfill and reduce illegal dumping
- Extra Cart fee is \$8.74/month



## **Recycling (Blue Cart):**

- Bi-weekly Recycling collection.
- Residents have two choices: 240 L and 360L Carts.
- 240 L Cart \$9/month, 360 L Cart \$9/month
- City owns and operates a Regional Material Recovery Facility (MRF)



## **Organics (Green Cart):**

- Program approved by Council, Phase 1 starts in May 2022 and Citywide May 2023
- Weekly (Summer), bi-weekly (Winter) cart pickup
- Cart Size: 240 L \$5/month



## **Recycling Stations (Recycling Depots and Yard Waste Sites):**

- Three (3) Recycling Stations, North, South, and West locations for City Residents only.
- Waste Reduction Fee covers for this Service, \$3.60/month
- Includes Yard Waste sites drop off- available from April until November
- Includes Recycling bins to separate Cardboard, Paper, Metal, Plastics, and Glass
- Fall Leaf Curbside Collection is included in the program fee.
- Christmas Tree collection is included in the program fee.

## **Regional Landfill:**

- The City owns the Lethbridge Regional Landfill; [Waste & Recycling Centre](#)
- MSW tipping fee is \$115/tonne; detail rates are available here: [Tipping Rates](#)
- Public Drop off sites for residents includes Household Hazardous Waste (HHW), battery recycling, Tire recycling, garbage disposal, etc.
- Commercial Drop-Off site to recycle, wood, concrete, shingles, drywall, etc.
- Compost pad and Future home of Regional Compost Facility (opening in January 2023)
- Hydrovac Disposal Facility
- Contaminated Soil disposal.



## **Business Recycling:**

- Industrial, Commercial and Institutional (ICI) and Construction and Demolition (CD) Strategy implemented since 2015
- Mandatory Recycling Program for ICI sector.
- Business Recycling information is here: [ICI & CD Strategy](#)

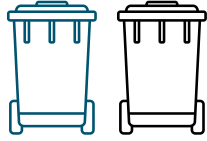


## **Corporate Sustainability:**

- GHG Reduction Targets and Corporate GHG Inventory, more information here: [Corporate Sustainability](#)
- Partners for Climate Protection, Milestone 2 achieved.
- Energy Conservation Master Plan, [ECMP](#)



# WASTE FACTS 2021



Waste Operations  
picked up over  
**1,500,000**  
recycling & garbage carts



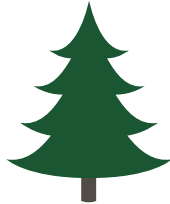
The MRF has shipped over  
**15,986,190**  
kilograms of recyclables  
to market since opening



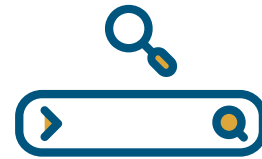
**21%**  
of waste delivered to the  
Waste & Recycling Centre was  
diverted from the landfill



Greenhouse Gas emissions  
were reduced  
**13%**  
from 2018 baseline levels



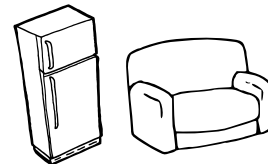
**1,138**  
Christmas Tree  
Pick-ups



**121,779**  
**WASTE WIZARD**  
searches

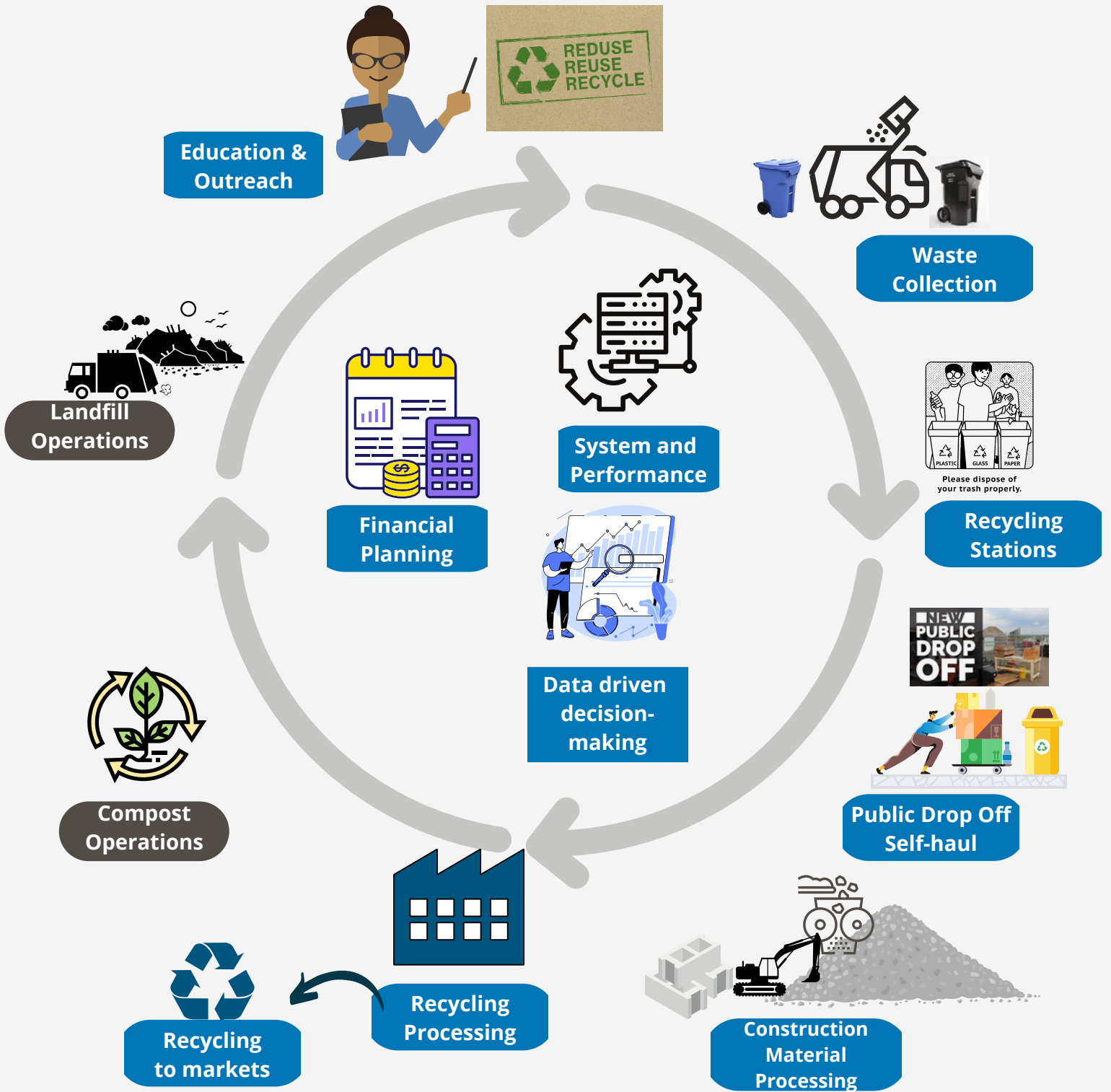


The Waste & Recycling Centre  
processed  
**129,247**  
tonnes of waste



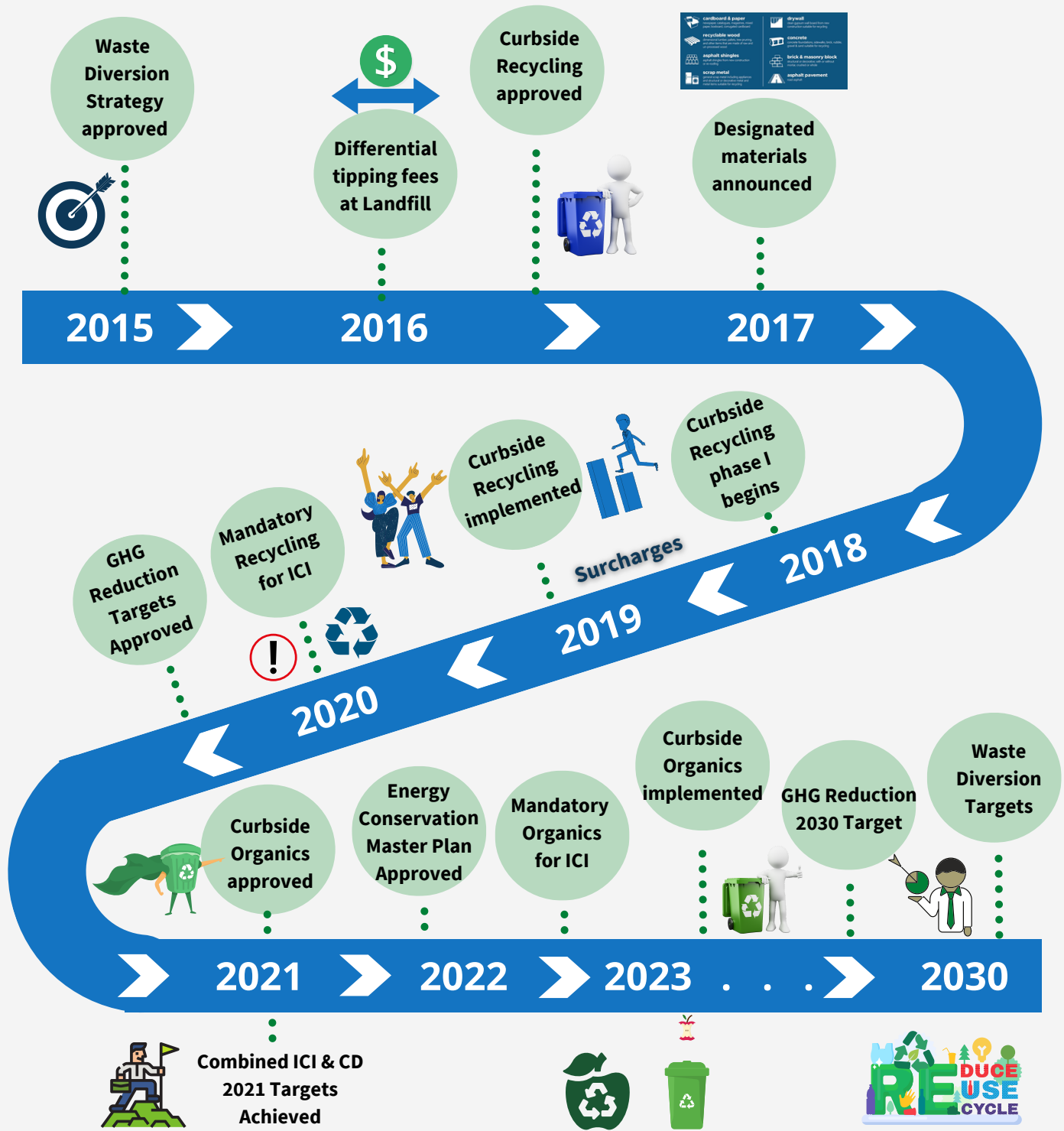
**3,447**  
Large Item Service  
pick-ups

# WASTE & RECYCLING UTILITY



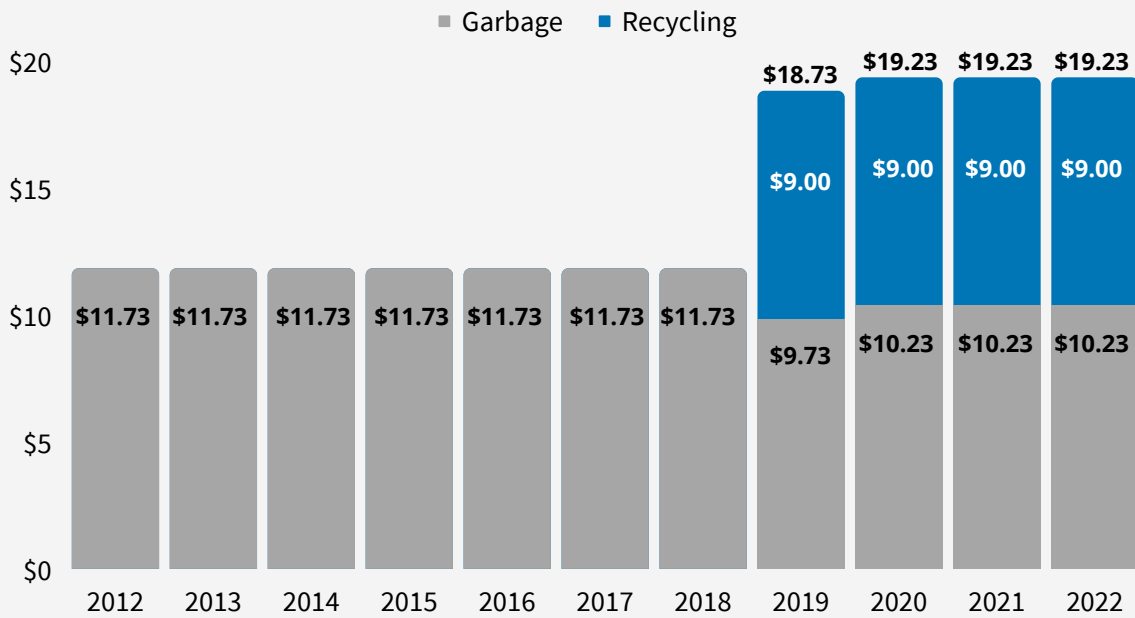


# WASTE & RECYCLING ROADMAP



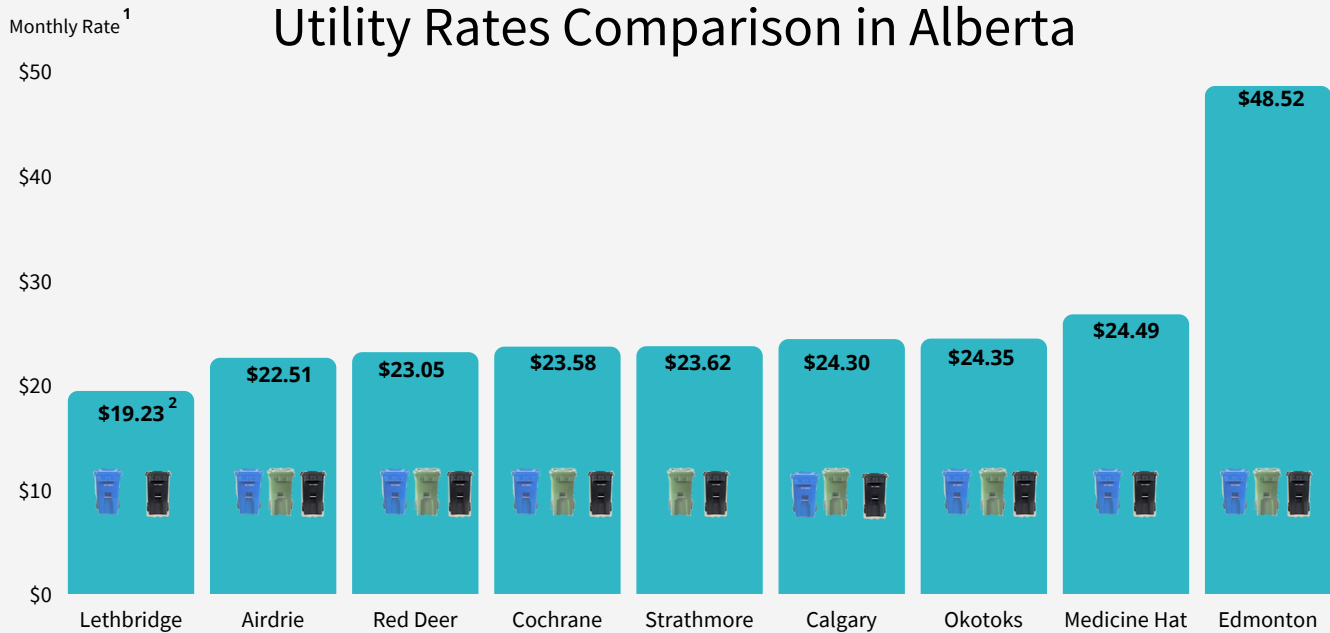
# UTILITY RATES HISTORY

## Utility Rates History in Lethbridge



Rates includes only waste collection fees for 30 days using a 240L (90 gallon) carts.  
Rate increase in 2019 due to the addition of Curbside Recycling, \$7 incremental fee.

## Utility Rates Comparison in Alberta



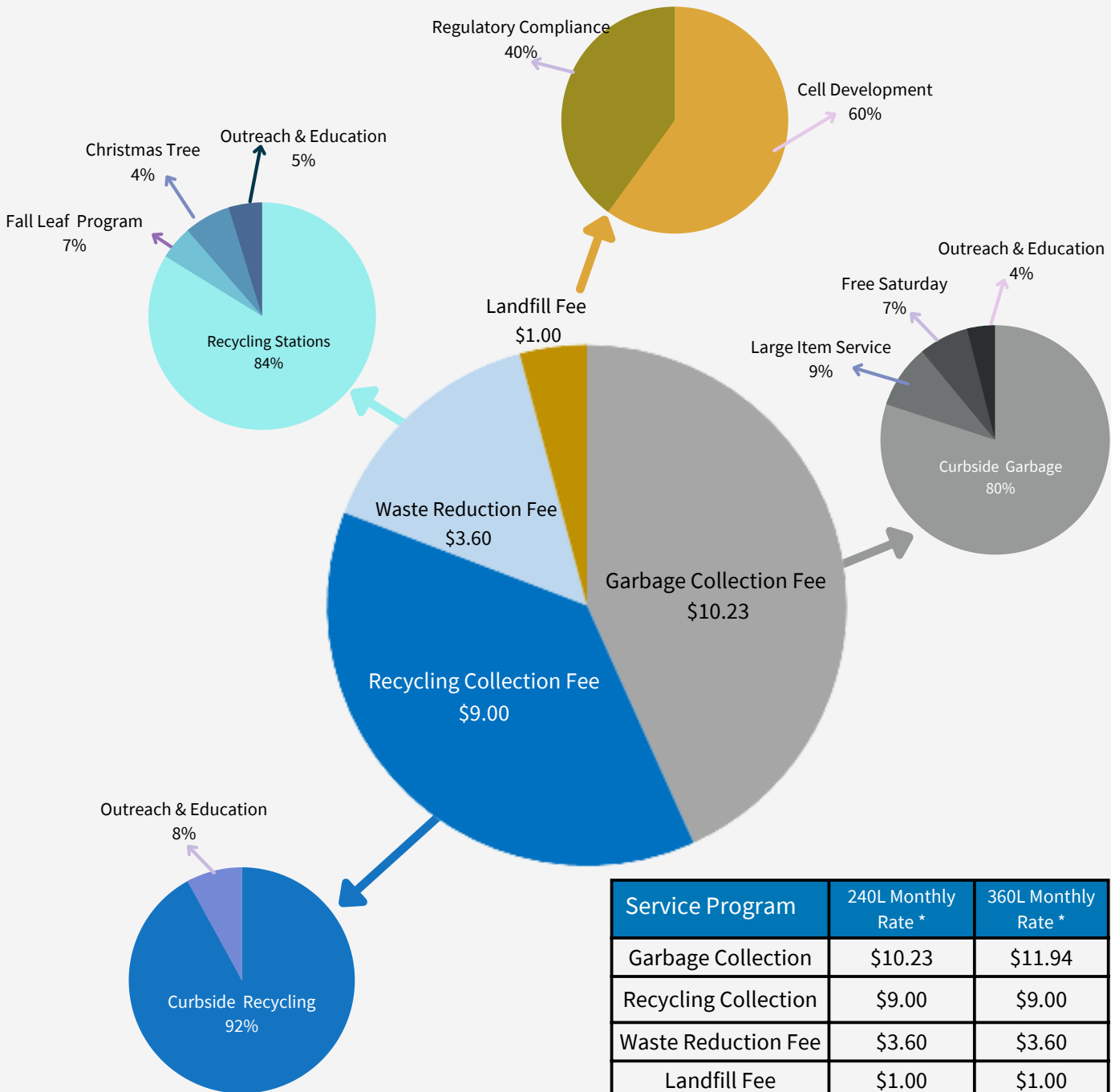
1- Rates comparison includes only waste collection fees for 30 days using a 240L (90 gallon) carts.

2- Lethbridge rates include Large Item Service and Free Saturday

3- All rates are as January 2022

# UTILITY RATES BREAKDOWN

## Monthly Residential Rate for all Services



Service Program	240L Monthly Rate *	360L Monthly Rate *
Garbage Collection	\$10.23	\$11.94
Recycling Collection	\$9.00	\$9.00
Waste Reduction Fee	\$3.60	\$3.60
Landfill Fee	\$1.00	\$1.00
<b>Total Utility Fee</b>	<b>\$23.83</b>	<b>\$25.54</b>

\* Rates calculated for 30 days

# WASTE COLLECTION

## 2021



### 3,731

tonnes of

Curbside Recycling collected



### 21,630

tonnes of

Curbside Garbage collected



### 74

tonnes collected through the  
Fall Leaf Program



### 925

Fall Leaf  
service requests



### 607

Demolition bins rented

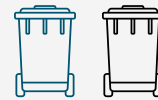
### 1,247,230

kilograms of recycling hauled to the  
Recycling Stations



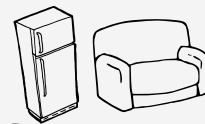
### 1.5 MILLION

recycling and garbage carts collected  
from Lethbridge households



### 760

new carts delivered



### 3,447

Large Item Service  
pick-ups



### 10,162

Service Requests



### 75,988

# of Yard Waste Visits

### 2,191,400

kilograms of yard waste hauled to the  
Yard Waste Sites

# WASTE COLLECTION




## Services & Programs

Residential Bi-Weekly Garbage Collection  
 Residential Bi-Weekly Recycling Collection  
 Multi-Family Unit Recycling Collection  
 Corporate Diversion Program  
 Commercial Garbage Collection

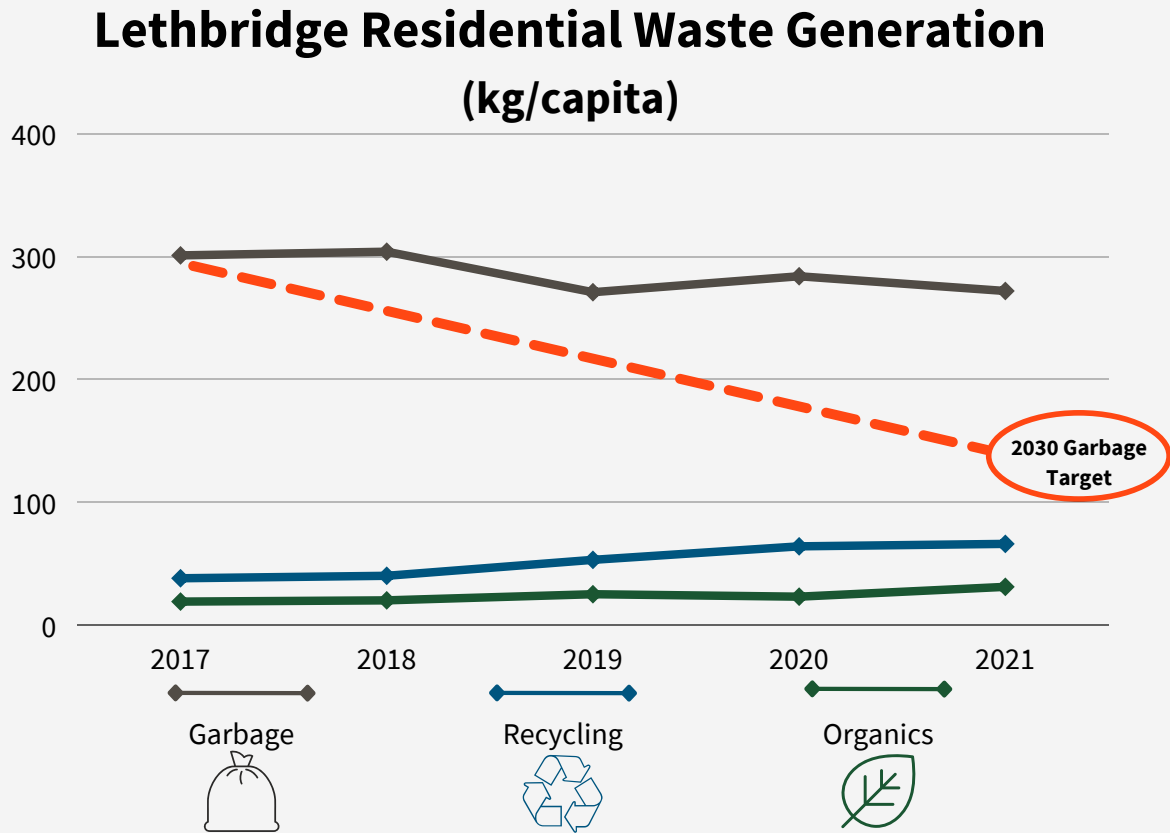
Seasonal Fall Leaf Collection  
 Seasonal Yard Waste Sites  
 Recycling Station Diversion  
 Large Item Collection Service  
 Clean Community Program



## Total Tonnes of Waste Collected

Material Type	2017	2018	2019	2020	2021	Trend
 <b>Garbage</b>	26,789	27,399	24,431	24,982	24,434	↓ 8.8%
 <b>Recycling</b>	2,806	2,897	4,350	5,108	5,238	↑ 187%
 <b>Yard Waste</b>	1,462	1,547	2,004	1,655	2,266	↑ 154%

# RESIDENTIAL WASTE GENERATION



### Residential Garbage Generation:

- Bi-weekly Curbside Garbage Collection
- Multi-family Garbage
- Free Saturday Garbage
- Residential Self-Haul Garbage
- Large Item Service Garbage

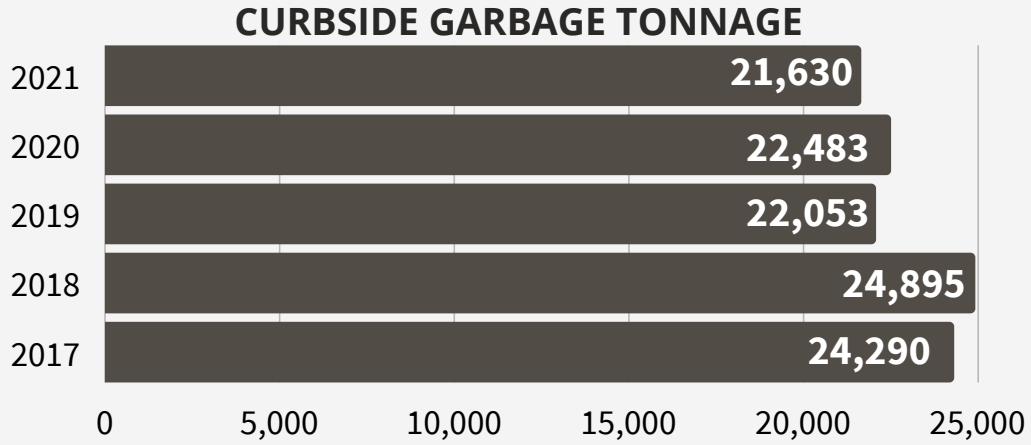
### Residential Recycling Generation:

- Bi-weekly Curbside Recycling Collection
- Multi-family Recycling
- Recycling Stations
- Free Saturday Recycling
- Residential Self-Haul Recycling
- Large Item Service Metal

### Residential Organics Generation:

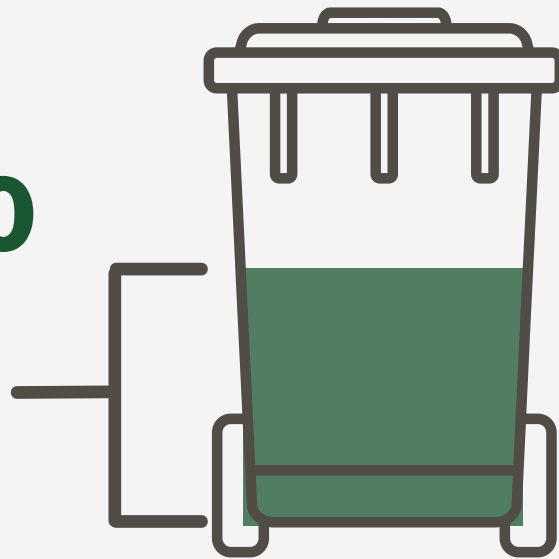
- Yard Waste Sites
- Fall Leaf Collection
- Free Saturday Organics
- Residential Self-Haul Organics

# Residential Bi-Weekly Garbage Collection



**>50%**

of materials in the black cart is organic waste that could be composted

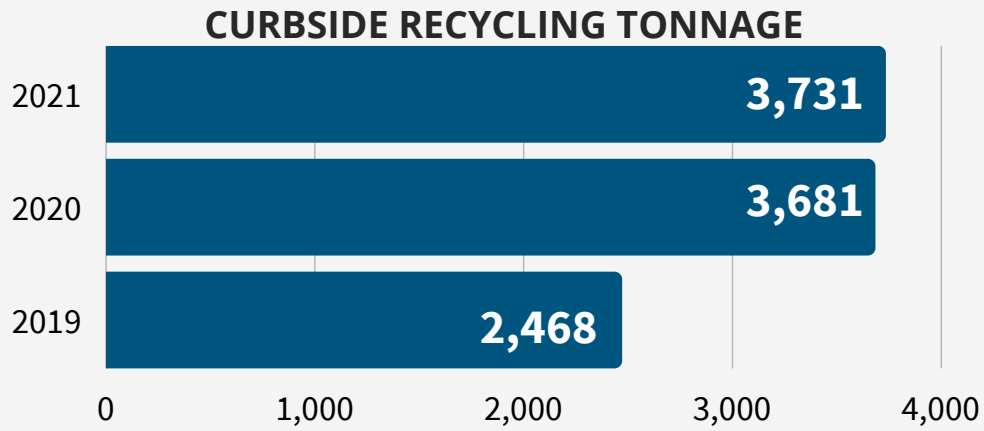


It is estimated that 11,000 tonnes of organic material could be diverted from the landfill

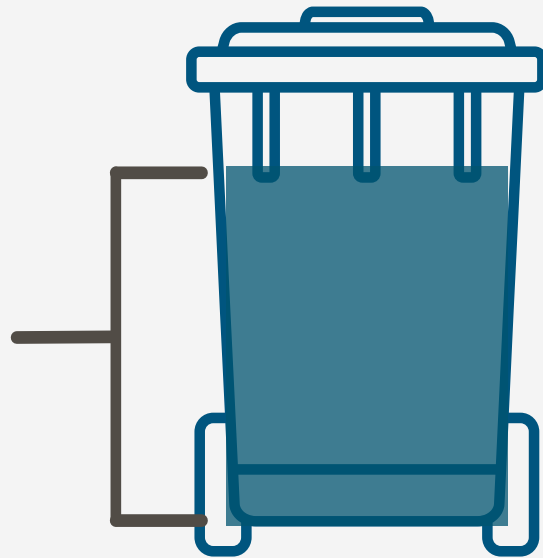
	<b>Organics</b>	<b>51%</b>
	<b>Garbage</b>	<b>35%</b>
	<b>Recycling</b>	<b>11%</b>
	<b>Product Stewardship</b>	<b>2%</b>





waste audit results (2019-2021)

# Residential Bi-Weekly Recycling Collection



**87%**  
of materials in the recycling carts is sent to markets



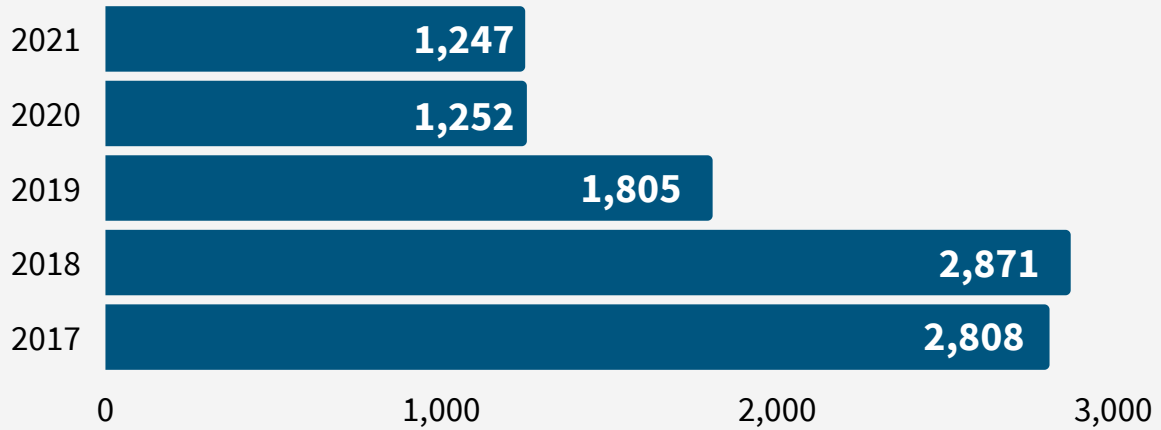
	<b>Recycling</b>	<b>87%</b>
	<b>Garbage</b>	<b>8%</b>
	<b>Organics</b>	<b>4%</b>
	<b>Product Stewardship</b>	<b>1%</b>

waste audit results (2019-2021)



# Recycling Station Drop-Off Collection

## RECYCLING STATION TONNAGE



## RECYCLING STATION MATERIAL TONNES

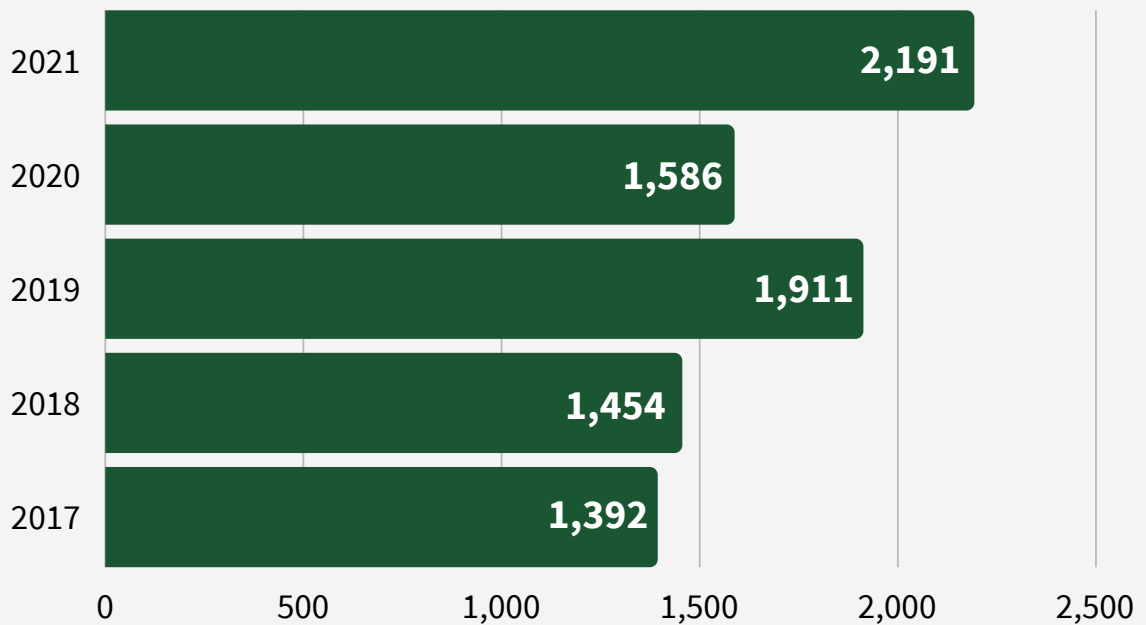
	2017	2018	2019	2020	2021
<b>Cardboard</b>	1,295	1,347	883	677	715
<b>Paper</b>	1,029	995	513	251	219
<b>Plastic</b>	250	277	188	121	121
<b>Glass</b>	132	145	133	152	149
<b>Metal</b>	102	107	88	51	43



# Yard Waste Sites Drop-Off Collection

For the first time, the Yard Waste Sites collected more than 2,000 tonnes in one year. This achievement showcases Lethbridge residents' clear commitment to diverting yard waste from the landfill.

## YARD WASTE SITES TONNAGE



Grass, leaves and garden waste collected at the Yard Waste Sites is composted at the Waste & Recycling Centre, and used in city parks and for ground remediation at the landfill.



# Waste Collection 2022 Plans

Activity	Description
<b>Curbside Organics Collection Program (Phase One)</b>	Phase One of the Curbside Organics Collection Program is set to begin in the spring of 2022. Weekly curbside organics collection during the summer and bi-weekly collection during the winter will be delivered to approximately 2,000 single-family residents. Garbage and recycling collection will remain on an alternating bi-weekly schedule.
<b>Route Optimization</b>	As part of Phase One, carts will be tracked per route and the number of service requests for missed carts will be reviewed and optimized for route efficiencies.
<b>Wind Mitigation Pilot Program</b>	Test potential solutions for blue cart wind issues in residential areas. Operations plans to use an in-truck technology to track the number of carts tipped over in testing areas and collect feedback from households participating.

## Did you know?

**That Waste and Recycling Operations use in-truck technology to track the status of each cart as collections are completed.** If there is an issue with the cart that prevents its regular collection, for example, if the cart is too close to obstacles, the cart location is flagged by the driver using time and location stamped photos. This flags a Waste and Recycling Technician to review and work with residents to resolve cart collection problems and ensure that future collections occur without issues. This collaborative approach allows the department to directly interact with customers to resolve common issues, but without causing significant disruption to the level of service.

# WASTE PROCESSING

## 2021



Waste & Recycling Centre received



ratings on Google



The Waste & Recycling Centre  
processed

**129,247**

tonnes of waste



**102,478**

total tonnes of  
garbage



**17,967**

total tonnes of  
recycling



**8,803**

total tonnes of  
organics



The Materials Recovery Facility  
processed

**9,549**

tonnes of recyclables

**3,357,971**

litres of leachate  
managed



**32,823**

Free Saturday hauls



**21%**

of waste delivered to the Waste & Recycling  
Centre was diverted from the landfill



**52**

wind closures (>70km/h)

# WASTE PROCESSING

## Services & Programs

### Waste Processing

- Mixed solid waste landfill disposal
- Industrial soil landfill disposal
- Hydro-vac waste disposal
- Composting
- Materials Recovery Facility recyclables
- Clean wood
- Concrete
- Scrap Metal
- Drywall

### Waste Processing

- Electronic waste
- Tires
- Used & cooking oil
- Household hazardous waste
- Paint

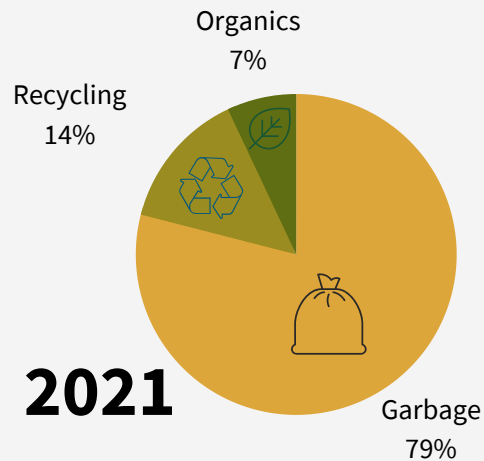
### Special Disposal Programs

- Free Saturday Subsidy Program
- Coaldale Landfill Subsidy Program
- Lethbridge County Neighbours Disposal Program






More than  
**98,000**

total hauls to the  
Waste & Recycling Centre in 2021

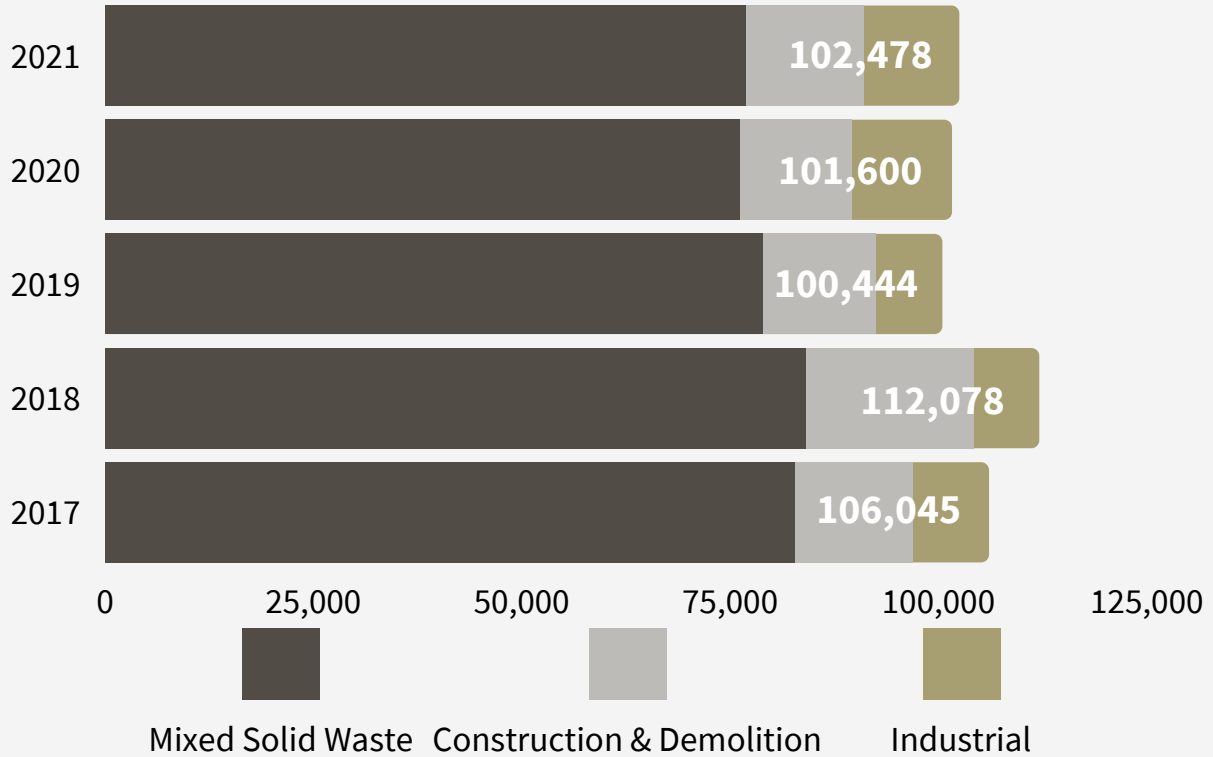


## Total Tonnes of Waste Processed at the Waste & Recycling Centre

Material Type	2017	2018	2019	2020	2021
 <b>Garbage</b>	106,045	112,078	100,444	101,600	102,478
 <b>Recycling</b>	8,464	8,855	11,930	15,099	17,967
 <b>Organics</b>	7,219	5,899	6,000	7,158	8,803

# Waste & Recycling Centre Landfill

## LANDFILL TONNAGE PROCESSED



**102,477,510**

kilograms of garbage in 2021

=

the weight of

**77,400**

passenger vehicles

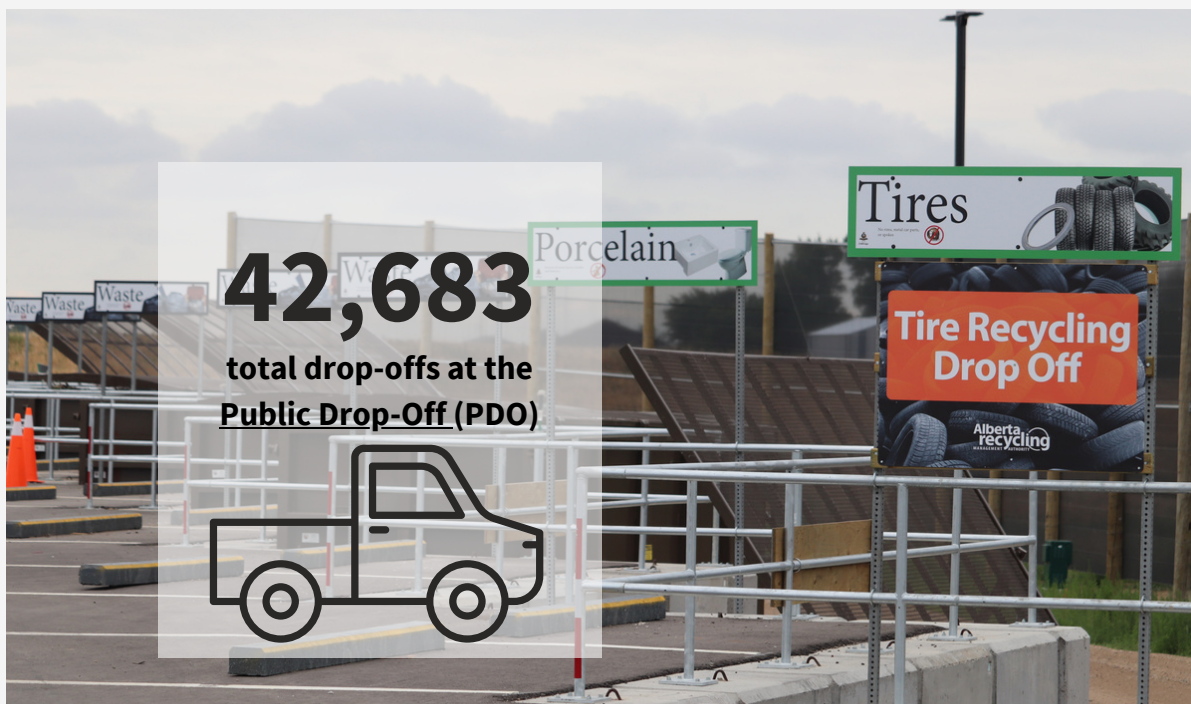


assumes each vehicle is 1,324 kgs

# Waste & Recycling Centre Diversion

## PUBLIC DROP-OFF TOTAL TONNES

Material Type	2017	2018	2019	2020	2021
<b>Metal</b>	248	298	338	420	414
<b>Glass</b>	136	152	179	153	149
<b>Electronic Waste</b>	116	116	124	102	124
<b>Tires</b>	102	72	72	57	82
<b>PDO Recyclables</b>	20	29	33	51	70
<b>Oil</b>	36	35	37	52	54
<b>Hazardous Waste</b>	37	39	41	56	53
<b>Paint</b>	38	52	44	46	37



# Waste & Recycling Centre Diversion

## CONSTRUCTION DROP OFF TOTAL TONNES

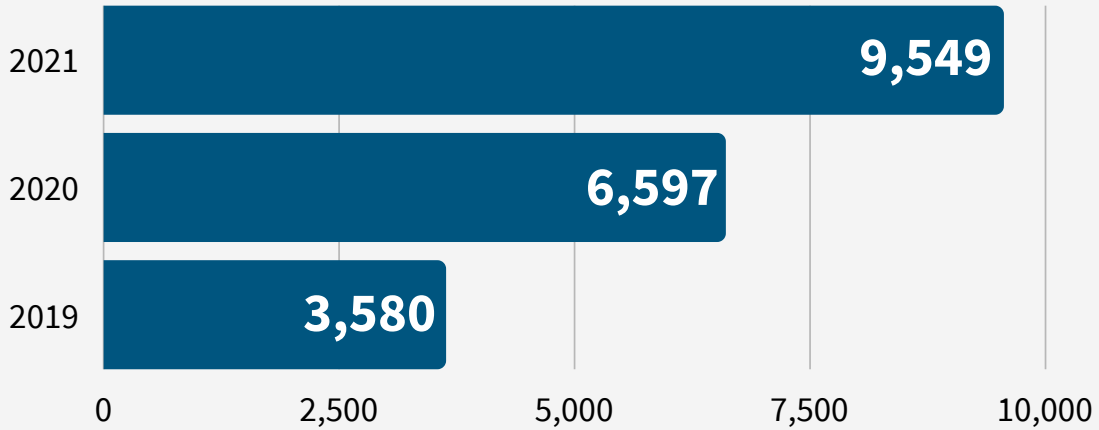
Material Type	2017	2018	2019	2020	2021
Recyclable Shingles	2,786	1,895	2,187	4,485	4,494
Pallets	1,853	2,051	1,438	1,986	2,552
Concrete	2,520	2,665	2,596	2,064	2,030
Drywall	218	338	192	385	346
Asphalt Pavement	155	345	342	120	226
Brick	460	359	252	248	185
Clean Sand & Gravel	1,611	2,456	1,879	295	179
Porcelain	9	12	17	16	29





# Materials Recovery Facility Processing

## MRF RECYCLING INBOUND TONNAGE



## RECYCLABLES SHIPPED TO MARKET (2019-2021)

Material Type	Loads	Tonnes
Cardboard	403	8,042
Paper	304	6,129
Plastic	81	1,299
Metal	23	432
Beverage Containers	359	87

**45%**

MRF recyclables increase in 2021

# Hydro-vac Waste Facility Opens



On August 3, 2021, the first load of hydro-vac waste was received at the newly constructed **Hydro-vac Waste Facility** at the WRC. This facility will support industry in the region with safe disposal of hydro-vac slurry waste. To date, the facility has received more than 3,650 tonnes of material from 693 hauls. In 2022, the WRC will focus on optimizing the facility to expand services and accepted material to increase utilization from regional and commercial customers.

## Did you know?

The majority of staff and equipment at the Waste and Recycling Centre is provided through partnerships with the private sector that is led and supported by a small contingent of City staff. Currently, four service contractors account for 80% of the facility staff involved in the day-to-day operations of the WRC.

## WRC Frequently Asked Questions:

**Q: What do I do with \_\_\_?**

**A:** Check out the [Waste Wizard](#) or call 311

**Q: Can I come get a \_\_\_?**

**A:** No, the WRC does not permit scavenging. The items received from customers are collected for safe disposal and recycling only. Please visit one of several non-for-profit organizations located throughout the community.

**Q: Can I have a tour of \_\_\_?**

**A:** Yes, the WRC has [recorded tours](#) and can provide both virtual and in-person tours for most groups. Please contact 311 and they will put you in contact with our Waste & Recycling Education team.

# Waste Processing 2022 Plans

Activity	Description
----------	-------------

**Organics Processing Facility**

To support the implementation of the Curbside Organics Collection Program and commercial organics diversion, the WRC will begin the construction and commission of a modern Organics Processing Facility. This facility will be capable of processing up to 20,000 tonnes of material a year from residential, commercial, and regional customers.

**Landfill Gas Control Plant**

The WRC will be commissioning and optimizing a Landfill Gas Control Plant. This will include 16 new landfill gas well fields, collection headers, and a control and construction plant. The Landfill Gas Control Plant will help to improve safety and environmental performance as well as reduce greenhouse gas emissions from the landfill site.



# CAPITAL PROJECTS

Completed in 2021

## Hydro-vac Waste Facility Construction:

---

In 2021, the City of Lethbridge constructed a Hydro-vac Waste Facility at the Waste and Recycling Centre. The facility accepts both contaminated and non-contaminated hydro-vac waste. The construction began in May of 2021 and was completed by August. It is one of the only facilities of its kind located in southern Alberta.

### Project Cost Factors:

- Project Development & Design - \$255,000
- Construction - \$1.2 Million

## Manhole 1 Rehabilitation:

---

Manhole 1 is the main leachate collection port for the Waste and Recycling Centre landfill facility, was in a state of imminent failure. Rehabilitation provided engineered structural support to the failing manhole. A stainless steel pipe liner and screen were installed to maintain access to pump the leachate as well as, a new jet pump to help reduce maintenance needs and increase system longevity.

### Project Cost Factors:

- Project Development & Design - \$170,000
- Construction - \$380,000
- Electrification - \$50,000

## Landfill Gas Extraction, Control Building & Flaring Facility Project:

---

Landfill gas (LFG) emissions from the landfill represent approximately 50% of the City's total carbon emissions. As LFG is primarily comprised of methane, reducing methane emissions from the landfill is critical to the City's carbon emissions reductions goals. In 2021, 16 LFG extraction wells and approximately 1800 meters of gas distribution pipe were installed at the WRC to remove and destroy methane gas.

### Project Cost Factors:

- Project Development & Design - \$631,000
- Specialized Procurement - \$600,000
- Construction - \$2.9 Million

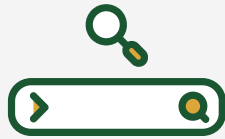
# Capital Projects 2022 Plans

Activity	Description
<b>Leachate Management</b>	Leachate is the liquid that is leftover from garbage that is deposited into a landfill. This liquid is highly contaminated and often considered toxic. The management of this liquid is critical to minimize the risk of it impacting both people that work with it and the environment. Currently, leachate is managed by re-circulating it back onto the active landfill surface. While this has been effective to date, it may not be an acceptable or viable method for future leachate management. The Waste and Recycling Utility is looking at alternative management options, such as treatment, and planning a full options cost and risk analysis to support the development of future leachate management and treatment.
<b>Industrial Contaminated Soils (ICS) Waste Cell Construction</b>	The construction of an ICS waste cell will allow the WRC to continue to receive contaminated soils from the industrial and commercial sectors of the region.



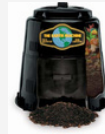
# EDUCATION & OUTREACH

## 2021



**121,779**

**WASTE WIZARD**  
searches



**89**

Backyard Composters sold



**925**

Fall Leaf  
service requests



**10,389**

collection schedule reminders



**188,321**

total website visits



**1,138**

Christmas Tree Pick-ups



**84**

calls answered



**612**

participants in School Tours,  
engagements, etc

### Services & Programs:

Green Waste Prevention Programs  
Diversion Education Activities  
Waste Wizard  
Landfill Tours  
School Presentations  
Outreach Events

Christmas Tree Diversion Program  
Fall Leaf Collection Communication  
Oops Tagging  
Composter Sales  
Customer Service

# Education & Outreach 2022 Plans

Activity	Description
<b>Blue Sky Centre</b>	In 2021, the Blue Sky Centre located at the Waste and Recycling Centre began installing education displays to expand on waste awareness programs and activities. The Blue Sky Centre exhibits will provide an opportunity to have more in-depth, interactive waste-related learning for the citizens and community of Lethbridge. The Education & Outreach team is currently working on developing and finalizing Indigenous displays for the Centre as well as planning for outdoor exhibits. The team is also working with the University of Lethbridge to finalize a virtual reality game where players will learn the Ins and Outs of working at the Materials Recovery Facility.
<b>Curbside Organics Education &amp; Outreach</b>	The Education & Outreach team will be busy this year working on the Phase One Curbside Organics Collection Program education and outreach program which will help build the city-wide program in the following year.
<b>Website Updates</b>	Updates to the City of Lethbridge Waste & Recycling Utility and Curbside websites will be completed in 2022 to re-organize and incorporate new information for residents and businesses of Lethbridge.

## Did you know?

A new mobile app called "Lethbridge Loop" has been launched and includes calendar reminders for curbside collection and links to the Waste Wizard.

# SUSTAINABILITY

## 2021



**146,365**

total corporate greenhouse gas emissions (tCO<sub>2</sub>e)



Greenhouse Gas emissions were reduced

**13%**

from 2018 baseline levels



**33**

of City Facilities participating in recycling programs



**11**

ECO Plans submitted on 20 projects



**14**

Environmental Property search requests



**3**

new pollinator gardens planted



Energy Conservation Plan approved

### Services & Programs:





# Sustainability 2021 Plans & Projects

Activity	Description
<b>Energy Conservation Master Plan &amp; Strategy</b>	<p>In early 2021, the City completed the Energy Conservation Master Plan and Strategy, which was approved as part of the Operating Budget 2019-2022. The Plan provides the overall framework, direction, and goals to improve energy efficiency within the corporation as it relates to water services, electricity provision, waste management and fuel use (electricity, natural gas, gasoline and diesel). Implementation actions were identified in the Plan and departments are now being directed to plan and deliver on the proposed actions. The Sustainability Team will monitor the Plan implementation and will deliver the first status report to City Council in December 2023.</p>
<b>Partners for Climate Protection</b>	<p>The City continues its participation in the Federation of Canadian Municipalities' Partners for Climate Protection (PCP) program. The PCP program is a network of Canadian municipal governments that have committed to reducing greenhouse gas (GHG) emissions and acting on climate change. In 2020, City Council passed a motion setting the City's GHG emission reduction target at 40% under 2018's levels by 2030. In 2022, the Sustainability Team is set to address Milestone 3 of the PCP program: develop a local action plan.</p>

To learn more about these and other projects please read the [Sustainability annual report](#)

# Sustainability 2022 Plans

---

## Capital Improvement Project E-11

### Sustainability Enhancements:

---

Sustainability's six key focus areas for the corporation are sustainability, air, energy, water, land, and waste. Many of the projects are pilot projects or small projects to move us towards sustainable goals for the corporation. In addition, the Energy Conservation Master Plan and Strategy has presented a list of recommended initiatives for the City of Lethbridge that would provide savings on energy. From the large list presented within the Master Plan, there are a few that have been selected for the Sustainability Team to support. The other initiatives would be considered by the appropriate business unit.

This project includes:

- Characterization/verification of three potential former landfills
- Enhancement and Technology pilots for two closed landfills
- Solar pilot at the Waste & Recycling Centre
- Waste & Recycling Utility building recover heat from exhaust pilot
- Waste & Recycling Utility building lighting retrofit
- Energy audits for utility-owned buildings (Material Recovery Facility & Waste Transfer Station)

### Electric Vehicles and Charging Stations:

---

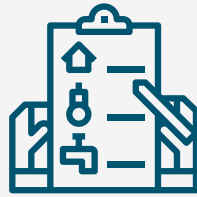
With a Zero Emission Vehicle Infrastructure Program (ZEVIP) and the Municipal Climate Change Action Centre (MCCAC), Sustainability is looking for grant opportunities for vehicle electrification. We are planning infrastructure to support charging stations and looking to convert WRU's fleet from gas to an electric vehicles. There are currently two chargers at the YMCA, that can service four vehicles and the Peaks to Prairies chargers located at the health unit.

**Find out more!**

Visit the [Sustainability website](#) to learn more about sustainability projects and environmental impact reduction efforts.

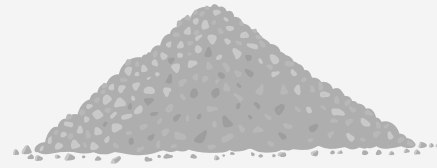
# BUSINESS DIVERSION

## 2021



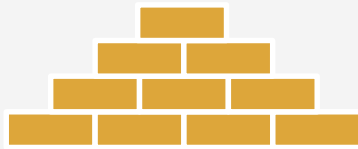
**3,422**

loads inspected at the  
Waste & Recycling Centre



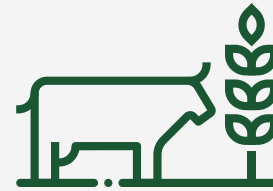
**215**

tonnes of glass used  
for pathway sub-base



**10,041,000**

kilograms of  
construction and demolition material  
diverted from the landfill



**474**

tonnes of drywall repurposed  
for animal bedding & fertilizer



**15%**

decrease of ICI kilograms per capita from  
the 2013 baseline level



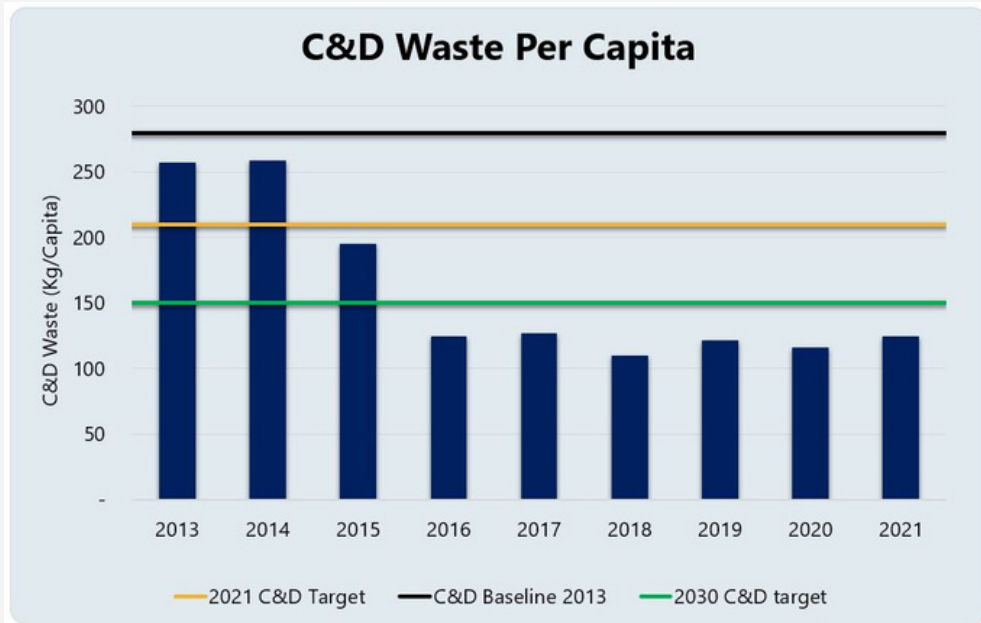
**51%**

decrease of C&D kilograms per capita  
from the 2013 baseline level

### Services & Programs:

Industrial, commercial and institutional (ICI) and Construction & Demolition (C&D)  
Diversion Programs focused on diverting waste from the landfill  
Provide education and outreach to the business community  
Mandatory Recycling programs at the Waste & Recycling Centre  
Surcharge disposal fees

# BUSINESS WASTE GENERATION



To learn more about these and other projects please read the [Business Diversion Annual Report](#)

# Business Diversion 2021 Projects

---

## Crushed Glass Project:

---

Last year, the Waste and Recycling Utility and City of Lethbridge Transportation departments took advantage of an environmentally-friendly method of building a new pathway by using recycled glass and reducing the need for raw products. Two hundred and fifteen tonnes of glass separated by our conscious residents and brought to the City's Recycling Stations during the last six years were used to build five kilometres of new pathway adjacent to the east side of Métis Trail, connecting from Temple Boulevard to the north of Whoop-Up Drive.



## Recycled Concrete:

---

Another opportunity to use collected recycled material was in the construction of the new Hydro-vac Waste Facility at the Waste & Recycling Centre (WRC). In this project, the team developed a solution that allowed 1,116 m<sup>3</sup> of recycled concrete to be utilized as a base material. The team also used a large amount of recycled concrete internally at the WRC including use in the landfill's perimeter road, manhole 1, and the Materials Recovery Facility compact concrete pavement projects.



## Recycled Drywall:

---

Drywall recycling also continued with a partnership between the WRC and local farms to utilize recycled drywall as an alternative cattle bedding at feedlots. After the drywall has been used as bedding material for a few months, the drywall, animal urine, and manure are composted and sent to fields where the compost was used for common crops such as canola seed. In 2021 alone, 474 tonnes of drywall were shipped offsite from the WRC.



# Business Diversion 2022 Plans

Activity	Description
<b>Mandatory Recycling &amp; Organics</b>	As approved by City Council in 2015, the Waste and Recycling Utility is planning to implement Mandatory Recycling and Organics programs for the Industrial, Commercial and Institutional sector. This program will help meet the City's approved 2030 Waste Diversion Target and encourage businesses to stop landfilling recyclable, compostable, and reusable material.
<b>Recyclable Asphalt Shingle Processing</b>	The Waste and Recycling Utility will also be exploring options for utilizing Recyclable Asphalt Shingles that are collected at the WRC.



**18,135**  
tonnes of Recyclable Asphalt Shingles  
have been collected since 2016

## Did you know?

That the ICI and C&D Waste Diversion Strategy achieved the 25% Waste Diversion Target for the ICI sector in 2021 and the 2030 Waste Diversion target (45%) for the C&D sector as early as 2016.

# ACKNOWLEDGEMENTS

Report Authors:

**Allyson Racz**, Waste & Recycling Technologist

**Joel Sanchez**, Waste & Recycling Utility General Manager

The following individuals contributed in the preparation of this report:

**James Nicholls**, Waste & Recycling Utility Operations Manager

**Lisa Nast**, Waste & Recycling Technologist

**Steve Rozee**, Waste & Recycling Centre Manager

**Bill MacMillan**, Waste & Recycling Utility Engineer

**Leslie Burke**, Education & Outreach Specialist

**Mandi Parker**, Sustainability Manager

**Felipe Pereira de Albuquerque, Jr.** Waste Diversion Engineer

**Meagan Williams**, Corporate Communications Team Lead

**Nick Kuhl**, Communications Strategist

**Stephanie Vehnon**, Water & Wastewater Communications & Outreach Specialist

**Waste & Recycling Collection Operations Team**

**Waste & Recycling Centre Contractors & Staff**



# THANK YOU TO OUR PARTNERS



311

Asset Management  
 Cart & Bin Suppliers  
 Condominium Boards  
 Corporate Communications  
 Financial Services  
 Fleet Services  
 Executive Leadership Team  
 Information Technology  
 Integrated Risk Management  
 Lethbridge City Council  
 M&B Scaling  
 Parks  
 Procurement  
 Property Managers  
 Regional WRC Customers  
 Regulatory Services  
 Transportation  
 Utilities  
 Waste & Wastewater  
 WRC Neighbours  
 WRC Facility Staff  
 YQL Neighbourhoods





# FOR MORE INFORMATION

## Waste & Recycling Utility:

- Please visit [our website](#)
- Read our [Waste Bylaw](#)
- [Waste & Recycling Centre website](#)
- [Designated Material List](#)
- [Sustainability website](#)
- [Blue Cart Recycling Sorting It Out](#)

## Curbside Collection:

- Please visit our [Curbside website](#)
- Ask the [Waste Wizard](#) what's In and Out
- [Sign up for collection reminders](#)
- [Report a problem](#) like missed collection or mess in lane

**Phone: 311 or 403-320-3111** (if outside Lethbridge)

## Policies:

- [Environment Policy CC51](#)
- [Waste Diversion Policy CC54](#)
- [Green Fleet Policy E2](#)

## Plans & Reports:

- [City of Lethbridge Comprehensive Waste Diversion/Waste Master Plan](#)
- [Stack'd Consulting - 2019 Organics Residential Collection Review](#)
- [City of Lethbridge - 2019 Food and Yard Waste Survey](#)

